

STARD8 antibody

Catalog Number: 115682

Product name

STARD8 antibody

IHC: 1:20-1:200

IF: 1:50-1:500

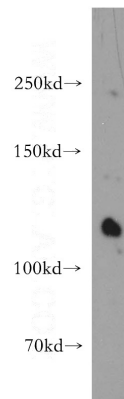
Specificity

Human; other species not tested.

Validations

Antibody description

STARD8 Rabbit Polyclonal antibody. Positive IF detected in HEK-293 cells. Positive IHC detected in human stomach cancer tissue, human kidney tissue. Positive WB detected in HEK-293 cells. Observed molecular weight by Western-blot: 115-120 kDa



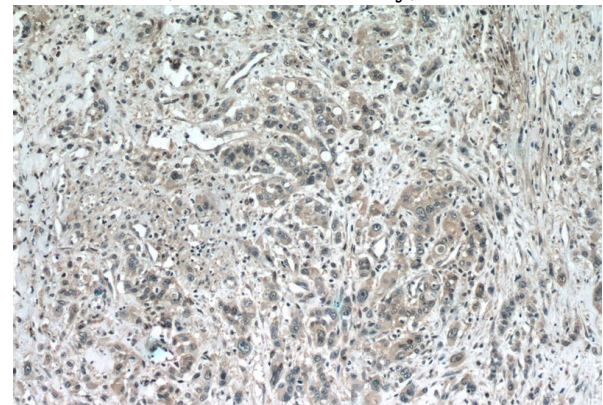
Preparation

This antibody was obtained by immunization of STARD8 recombinant protein (Accession Number: NM_014725). Purification method: Antigen affinity purified.

HEK-293 cells were subjected to SDS PAGE followed by western blot with Catalog No:115682(STARD8 antibody) at dilution of 1:400

Formulation

PBS with 0.02% sodium azide and 50% glycerol pH 7.3.



Storage

Store at -20°C. DO NOT ALIQUOT

Clonality

Polyclonal

Immunohistochemistry of paraffin-embedded human stomach cancer tissue slide using Catalog No:115682(STARD8 Antibody) at dilution of 1:50 (under 10x lens)

Ig Type

Rabbit IgG

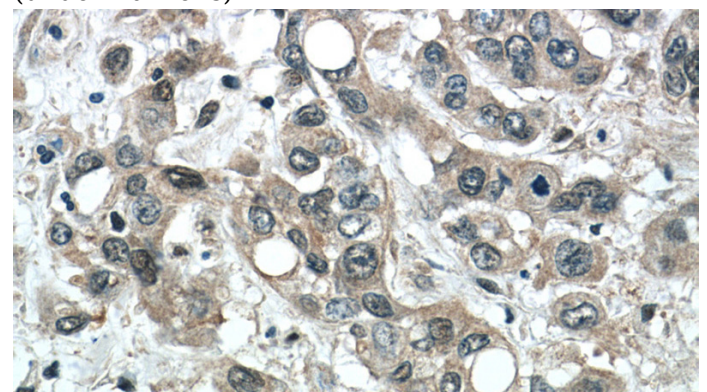
Applications

ELISA, WB, IHC, IF

Dilutions

Recommended Dilution:

WB: 1:500-1:5000



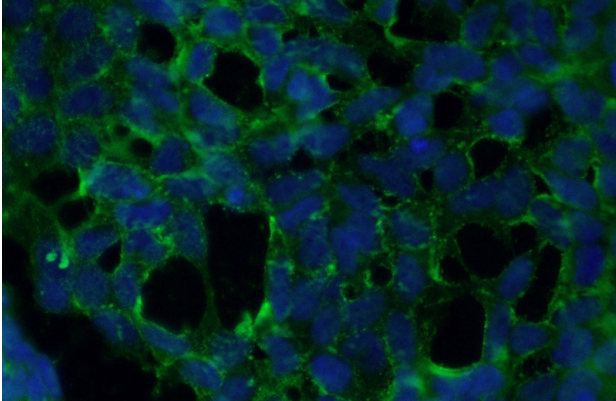
Immunohistochemistry of paraffin-embedded

STARD8 antibody



Catalog Number: 115682

human stomach cancer tissue slide using Catalog No:115682(STARD8 Antibody) at dilution of 1:50 (under 40x lens)



Immunofluorescent analysis of (10% Formaldehyde) fixed HEK-293 cells using Catalog No:115682(STARD8 Antibody) at dilution of 1:50 and Alexa Fluor 488-conjugated AffiniPure Goat Anti-Rabbit IgG(H+L)