

# SRBD1 antibody

Catalog Number: 115663

## Product name

SRBD1 antibody

## Specificity

Human, Mouse; other species not tested.

## Antibody description

SRBD1 Rabbit Polyclonal antibody. Positive WB detected in mouse testis tissue, mouse brain tissue. Positive IP detected in mouse brain tissue. Observed molecular weight by Western-blot: 100-120 kDa

## Preparation

This antibody was obtained by immunization of SRBD1 recombinant protein (Accession Number: BC032538). Purification method: Antigen affinity purified.

## Formulation

PBS with 0.1% sodium azide and 50% glycerol pH 7.3.

## Storage

Store at -20°C. DO NOT ALIQUOT

## Clonality

Polyclonal

## Ig Type

Rabbit IgG

## Applications

ELISA, WB, IP

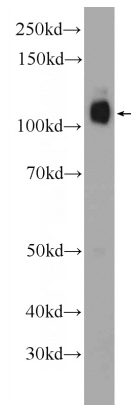
## Dilutions

Recommended Dilution:

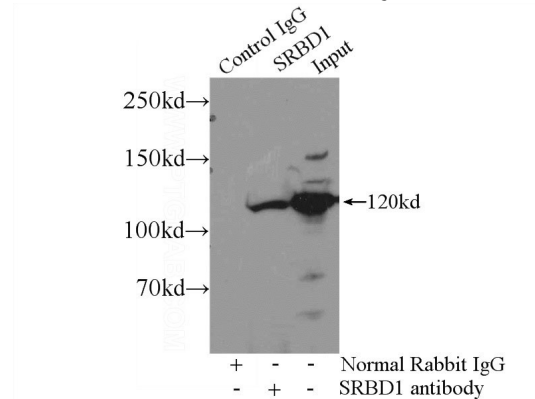
WB: 1:200-1:1000

IP: 1:200-1:1000

## Validations



mouse testis tissue were subjected to SDS PAGE followed by western blot with Catalog No:115663(SRBD1 Antibody) at dilution of 1:300



IP Result of anti-SRBD1 (IP:Catalog No:115663, 4ug; Detection:Catalog No:115663 1:300) with mouse brain tissue lysate 4000ug.