

# SRA1 antibody

Catalog Number: 115662

## Product name

SRA1 antibody

## Specificity

Human; other species not tested.

## Antibody description

SRA1 Rabbit Polyclonal antibody. Positive WB detected in MCF-7 cells, A2780 cells, HEK-293 cells. Positive IHC detected in human breast cancer tissue. Positive FC detected in MCF-7 cells. Observed molecular weight by Western-blot: 30 kDa, 33 kDa

## Preparation

This antibody was obtained by immunization of SRA1 recombinant protein (Accession Number: BC067895). Purification method: Antigen affinity purified.

## Formulation

PBS with 0.1% sodium azide and 50% glycerol pH 7.3.

## Storage

Store at -20°C. DO NOT ALIQUOT

## Clonality

Polyclonal

## Ig Type

Rabbit IgG

## Applications

ELISA, WB, IHC, FC

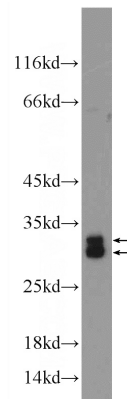
## Dilutions

Recommended Dilution:

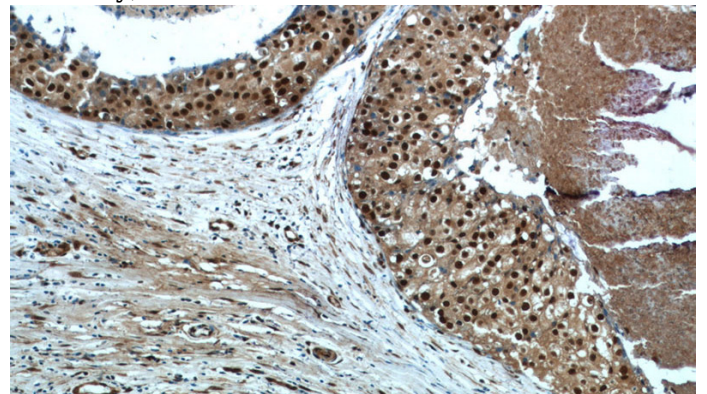
WB: 1:500-1:5000

IHC: 1:20-1:200

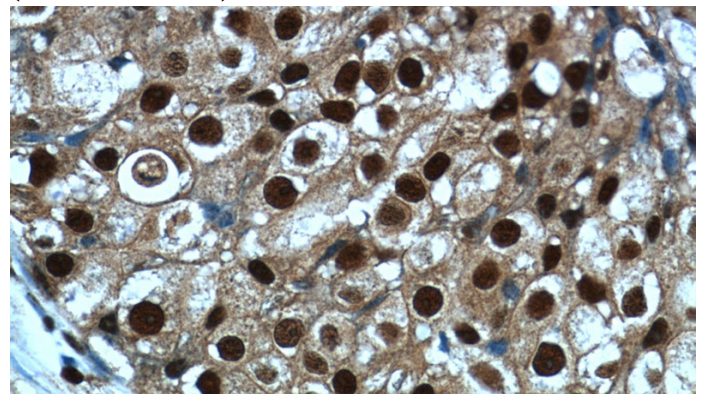
## Validations



MCF-7 cells were subjected to SDS PAGE followed by western blot with Catalog No:115662(SRA1 Antibody) at dilution of 1:1000



Immunohistochemistry of paraffin-embedded human breast cancer tissue slide using Catalog No:115662(SRA1 Antibody) at dilution of 1:50 (under 10x lens)



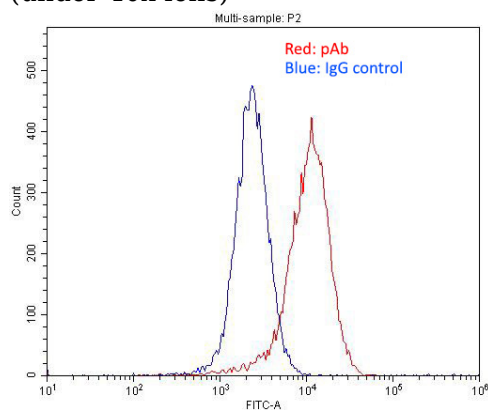
Immunohistochemistry of paraffin-embedded human breast cancer tissue slide using Catalog No:115662(SRA1 Antibody) at dilution of 1:50

# SRA1 antibody

Catalog Number: 115662

---

(under 40x lens)



1X10<sup>6</sup> MCF-7 cells were stained with 0.2ug SRA1 antibody (Catalog No:115662, red) and control antibody (blue). Fixed with 4% PFA blocked with 3% BSA (30 min). Alexa Fluor 488-conjugated AffiniPure Goat Anti-Rabbit IgG(H+L) with dilution 1:1500.