

# SPTBN1-Specific antibody



Catalog Number: 115653

## Product name

SPTBN1-Specific antibody

IP: 1:200-1:2000

IHC: 1:20-1:200

## Specificity

Human, Mouse; other species not tested.

## Antibody description

SPTBN1-Specific Rabbit Polyclonal antibody. Positive IHC detected in human lung tissue, human kidney tissue. Positive IP detected in HEK-293 cells. Positive WB detected in mouse brain tissue, mouse kidney tissue, mouse lung tissue. Observed molecular weight by Western-blot: 275kd

## Preparation

This antibody was obtained by immunization of Peptide (Accession Number: NM\_003128). Purification method: Antigen affinity purified.

## Formulation

PBS with 0.02% sodium azide and 50% glycerol pH 7.3.

## Storage

Store at -20°C. DO NOT ALIQUOT

## Clonality

Polyclonal

## Ig Type

Rabbit IgG

## Applications

ELISA, WB, IHC, IP

## Dilutions

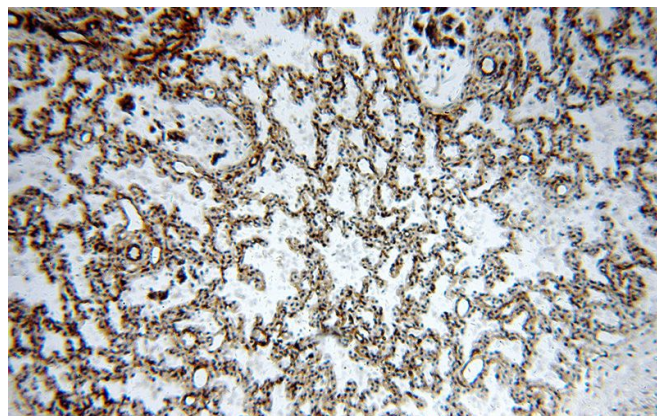
Recommended Dilution:

WB: 1:500-1:5000

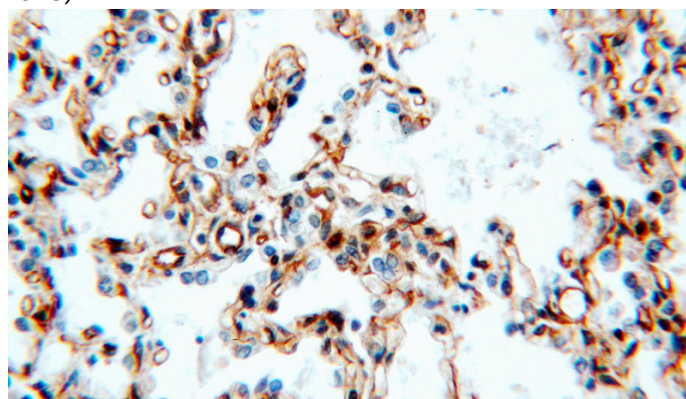
## Validations



mouse brain tissue were subjected to SDS PAGE followed by western blot with Catalog No:115653(SPTBN1-Specific antibody) at dilution of 1:300



Immunohistochemical of paraffin-embedded human lung using Catalog No:115653(SPTBN1-Specific antibody) at dilution of 1:100 (under 10x lens)



# SPTBN1-Specific antibody



Catalog Number: 115653

Immunohistochemical of paraffin-embedded human lung using Catalog No:115653(SPTBN1-Specific antibody) at dilution of 1:100 (under 40x

IP Result of anti-SPTBN1-Specific (IP:Catalog No:115653, 5ug; Detection:Catalog No:115653 1:600) with HEK-293 cells lysate 1000ug.

