

SPRY4 antibody



Catalog Number: 115650

Product name

SPRY4 antibody

Specificity

Human; other species not tested.

Antibody description

SPRY4 Rabbit Polyclonal antibody. Positive WB detected in A375 cells. Positive IHC detected in human cervical cancer tissue, human heart tissue. Observed molecular weight by Western-blot: 35-38 kDa

Preparation

This antibody was obtained by immunization of SPRY4 recombinant protein (Accession Number: NM_001293289). Purification method: Antigen Affinity purified.

Formulation

PBS with 0.02% sodium azide and 50% glycerol pH 7.3.

Storage

Store at -20°C. DO NOT ALIQUOT

Clonality

Polyclonal

Ig Type

Rabbit IgG

Applications

ELISA, WB, IHC

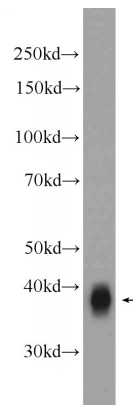
Dilutions

Recommended Dilution:

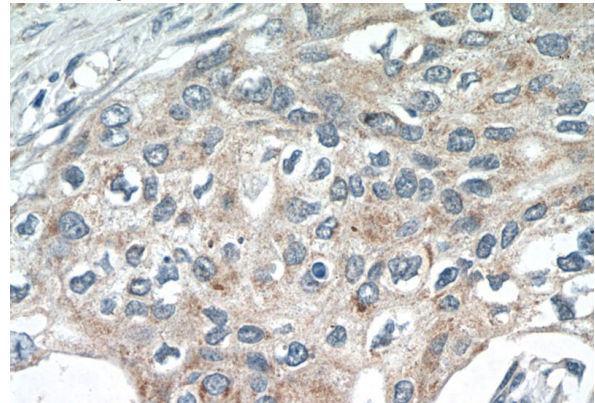
WB: 1:500-1:5000

IHC: 1:20-1:200

Validations



A375 cells were subjected to SDS PAGE followed by western blot with Catalog No:115650(SPRY4 Antibody) at dilution of 1:1000



Immunohistochemistry of paraffin-embedded human cervical cancer tissue slide using Catalog No:115650(SPRY4 Antibody) at dilution of 1:50 (under 40x lens)