

# SPP antibody

Catalog Number: 115639

## Product name

SPP antibody

## Specificity

Human, Mouse; other species not tested.

## Antibody description

SPP Rabbit Polyclonal antibody. Positive WB detected in HEK-293 cells, mouse kidney tissue, mouse liver tissue. Positive IHC detected in human hepat°Cirrhosis tissue. Observed molecular weight by Western-blot: 45kd,100kd

## Preparation

This antibody was obtained by immunization of SPP recombinant protein (Accession Number: NM\_030789). Purification method: Antigen affinity purified.

## Formulation

PBS with 0.02% sodium azide and 50% glycerol pH 7.3.

## Storage

Store at -20°C. DO NOT ALIQUOT

## Clonality

Polyclonal

## Ig Type

Rabbit IgG

## Applications

ELISA, WB, IHC

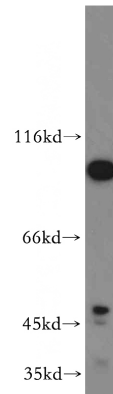
## Dilutions

Recommended Dilution:

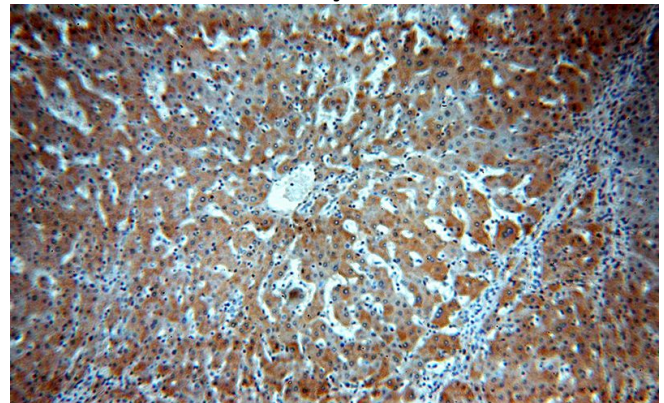
WB: 1:500-1:5000

IHC: 1:20-1:200

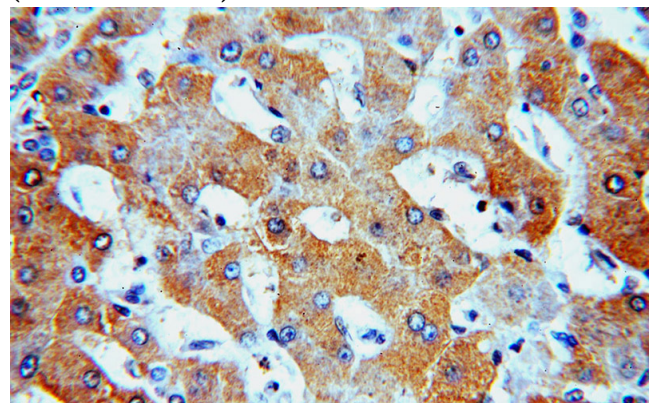
## Validations



HEK-293 cells were subjected to SDS PAGE followed by western blot with Catalog No:115639(SPP antibody) at dilution of 1:300



Immunohistochemical of paraffin-embedded human hepatocirrhosis using Catalog No:115639(SPP antibody) at dilution of 1:100 (under 10x lens)



Immunohistochemical of paraffin-embedded human hepatocirrhosis using Catalog

# SPP antibody



Catalog Number: 115639

---

No:115639(SPP antibody) at dilution of 1:100 (under 40x lens)