

# SSBP1 antibody



Catalog Number: 115606

---

## Product name

SSBP1 antibody

## Specificity

Human, Mouse, Rat; other species not tested.

## Antibody description

SSBP1 Rabbit Polyclonal antibody. Positive WB detected in A375 cells, mouse pancreas tissue, rat pancreas tissue. Observed molecular weight by Western-blot: 17 kDa

## Preparation

This antibody was obtained by immunization of SSBP1 recombinant protein (Accession Number: NM\_001256512). Purification method: Antigen affinity purified.

## Formulation

PBS with 0.1% sodium azide and 50% glycerol pH 7.3.

## Storage

Store at -20°C. DO NOT ALIQUOT

## Clonality

Polyclonal

## Ig Type

Rabbit IgG

## Applications

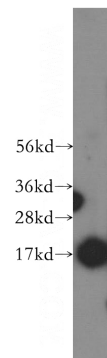
ELISA, WB

## Dilutions

Recommended Dilution:

WB: 1:1000-1:10000

## Validations



A375 cells were subjected to SDS PAGE followed by western blot with Catalog No:115606(SSBP1 antibody) at dilution of 1:500