

SSB antibody

Catalog Number: 115605

Product name

SSB antibody

Immunogen

[Human SSB Recombinant protein \(GST tag\)](#)

Specificity

Human, Mouse, Rat; other species not tested.

Antibody description

SSB Rabbit Polyclonal antibody. Positive IHC detected in human colon cancer tissue. Positive IF detected in HeLa cells. Positive WB detected in Jurkat cells, HEK-293 cells, HeLa cells. Positive IP detected in Jurkat cells. Observed molecular weight by Western-blot: 48 kDa

Preparation

This antibody was obtained by immunization of SSB recombinant protein (Accession Number: NM_003142). Purification method: Antigen affinity purified.

Formulation

PBS with 0.1% sodium azide and 50% glycerol pH 7.3.

Storage

Store at -20°C. DO NOT ALIQUOT

Clonality

Polyclonal

Ig Type

Rabbit IgG

Applications

ELISA, IHC, WB, IF, IP

Dilutions

Recommended Dilution:

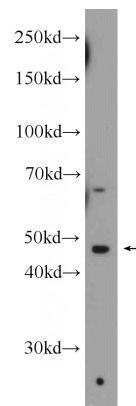
WB: 1:200-1:1000

IP: 1:200-1:1000

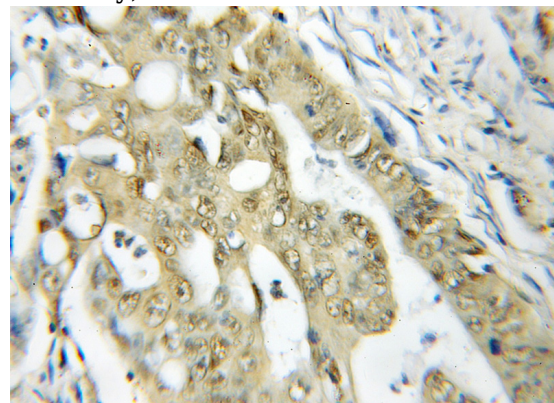
IHC: 1:20-1:200

IF: 1:20-1:200

Validations



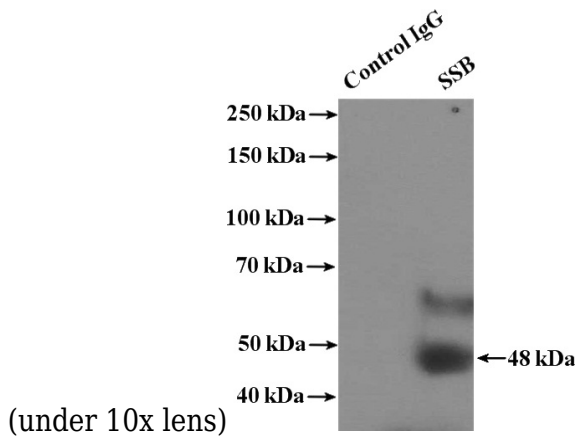
Jurkat cells were subjected to SDS PAGE followed by western blot with Catalog No:115605(SSB Antibody) at dilution of 1:300



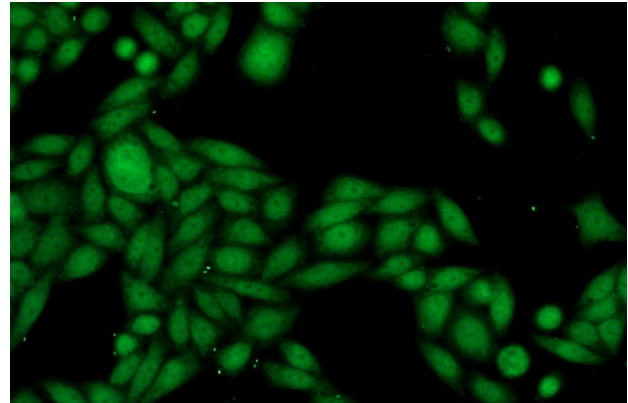
Immunohistochemical of paraffin-embedded human colon cancer using Catalog No:115605(SSB antibody) at dilution of 1:50

SSB antibody

Catalog Number: 115605



IP Result of anti-SSB (IP:Catalog No:115605, 4ug;
Detection:Catalog No:115605 1:300) with Jurkat
cells lysate 3600ug.



Immunofluorescent analysis of HeLa cells using
Catalog No:115605(SSB Antibody) at dilution of
1:50 and Alexa Fluor 488-conjugated AffiniPure
Goat Anti-Rabbit IgG(H+L)