

# SS18L2 antibody



Catalog Number: 115604

## Product name

SS18L2 antibody

## Specificity

human, mouse; other species not tested.

## Antibody description

SS18L2 Rabbit Polyclonal antibody. Positive WB detected in human liver tissue. Positive IHC detected in human prostate cancer. Observed molecular weight by Western-blot: 6-7kd

## Preparation

This antibody was obtained by immunization of SS18L2 recombinant protein (Accession Number: XM\_017006548). Purification method: Antigen affinity purified.

## Formulation

PBS with 0.1% sodium azide and 50% glycerol pH 7.3.

## Storage

Store at -20°C. DO NOT ALIQUOT

## Clonality

Polyclonal

## Ig Type

Rabbit IgG

## Applications

ELISA, WB, IHC

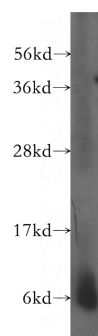
## Dilutions

Recommended Dilution:

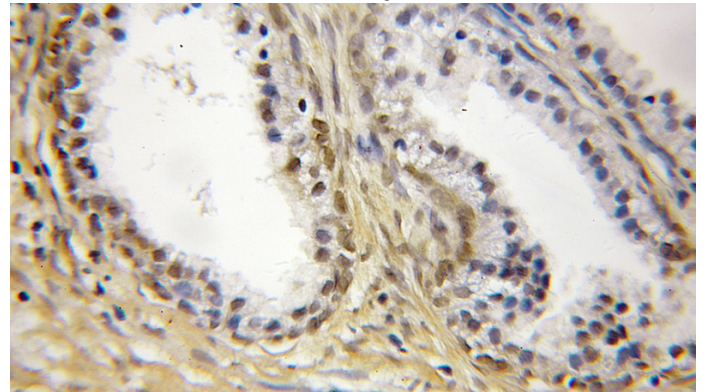
WB: 1:200-1:2000

IHC: 1:20-1:200

## Validations



human liver tissue were subjected to SDS PAGE followed by western blot with Catalog No:115604(SS18L2 antibody) at dilution of 1:500



Immunohistochemical of paraffin-embedded human prostate cancer using Catalog No:115604(SS18L2 antibody) at dilution of 1:50 (under 25x lens)