

# SRRM1 antibody

Catalog Number: 115601

## Product name

SRRM1 antibody

## Specificity

Human, Mouse, Rat; other species not tested.

## Antibody description

SRRM1 Rabbit Polyclonal antibody. Positive IP detected in HeLa cells. Positive WB detected in mouse liver tissue, HeLa cells, Jurkat cells, UV treated HEK-293 cells. Observed molecular weight by Western-blot: 120-160 kDa

## Preparation

This antibody was obtained by immunization of SRRM1 recombinant protein (Accession Number: NM\_005839). Purification method: Antigen affinity purified.

## Formulation

PBS with 0.02% sodium azide and 50% glycerol pH 7.3.

## Storage

Store at -20°C. DO NOT ALIQUOT

## Clonality

Polyclonal

## Ig Type

Rabbit IgG

## Applications

ELISA, WB, IP

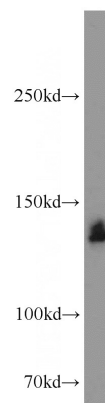
## Dilutions

Recommended Dilution:

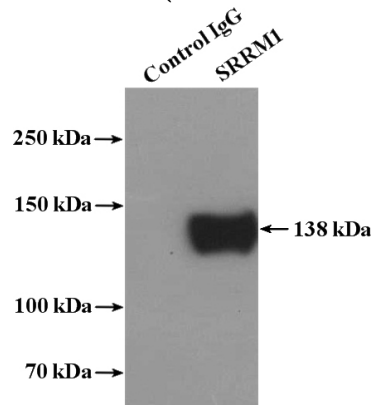
WB: 1:200-1:2000

IP: 1:200-1:1000

## Validations



mouse liver tissue were subjected to SDS PAGE followed by western blot with Catalog No:115601 (SRRM1 antibody) at dilution of 1:500



IP Result of anti-SRRM1 (IP:Catalog No:115601, 4ug; Detection:Catalog No:115601 1:300) with HeLa cells lysate 3200ug.