

# SRPX2 antibody



Catalog Number: 115599

## Product name

SRPX2 antibody

## Specificity

Human, Mouse, Rat; other species not tested.

## Antibody description

SRPX2 Rabbit Polyclonal antibody. Positive IHC detected in human placenta tissue, human brain tissue, human heart tissue, human kidney tissue, human lung tissue, human skin tissue, human spleen tissue. Positive WB detected in human placenta tissue, HepG2 cells, human brain tissue, human kidney tissue, Transfected HEK-293 cells. Observed molecular weight by Western-blot: 53kd

## Preparation

This antibody was obtained by immunization of SRPX2 recombinant protein (Accession Number: NM\_014467). Purification method: Antigen affinity purified.

## Formulation

PBS with 0.1% sodium azide and 50% glycerol pH 7.3.

## Storage

Store at -20°C. DO NOT ALIQUOT

## Clonality

Polyclonal

## Ig Type

Rabbit IgG

## Applications

ELISA, WB, IHC

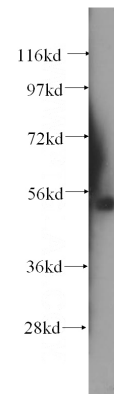
## Dilutions

Recommended Dilution:

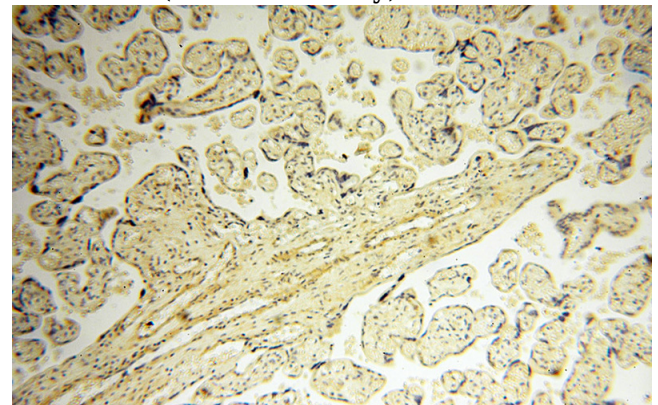
WB: 1:500-1:5000

IHC: 1:20-1:200

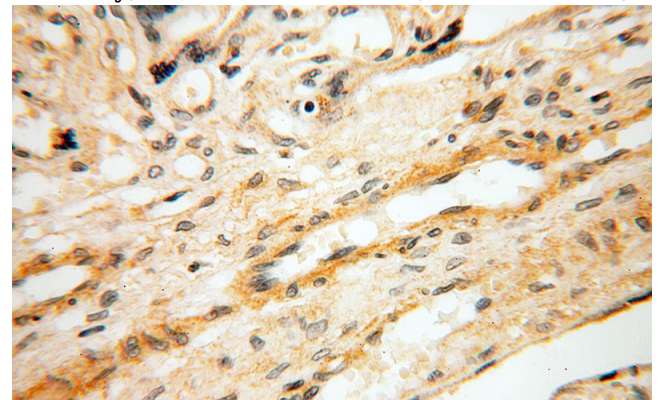
## Validations



human placenta tissue were subjected to SDS PAGE followed by western blot with Catalog No:115599(SRPX2 antibody) at dilution of 1:500



Immunohistochemical of paraffin-embedded human placenta using Catalog No:115599(SRPX2 antibody) at dilution of 1:100 (under 10x lens)



# SRPX2 antibody

Catalog Number: 115599

---

Immunohistochemical of paraffin-embedded human placenta using Catalog No:115599(SRPX2 antibody) at dilution of 1:100 (under 40x lens)

Transfected HEK-293 cells were subjected to SDS PAGE followed by western blot with Catalog No:115599(SRPX2 Antibody) at dilution of 1:1000

