

SRP19 antibody

Catalog Number: 115591

Product name

SRP19 antibody

WB: 1:500-1:5000

IP: 1:200-1:2000

Specificity

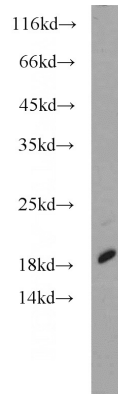
Human, Mouse, Rat; other species not tested.

IF: 1:20-1:200

Antibody description

SRP19 Rabbit Polyclonal antibody. Positive WB detected in human liver tissue, A549 cells, HeLa cells, K-562 cells, mouse kidney tissue, mouse liver tissue, mouse ovary tissue, Raji cells. Positive IP detected in mouse kidney tissue. Positive IF detected in HeLa cells. Observed molecular weight by Western-blot: 18-25 kDa

Validations



Preparation

This antibody was obtained by immunization of SRP19 recombinant protein (Accession Number: NM_003135). Purification method: Antigen affinity purified.

human liver tissue were subjected to SDS PAGE followed by western blot with Catalog No:115591(SRP19 antibody) at dilution of 1:1000

Formulation

PBS with 0.1% sodium azide and 50% glycerol pH 7.3.

Storage

Store at -20°C. DO NOT ALIQUOT

Clonality

Polyclonal

Ig Type

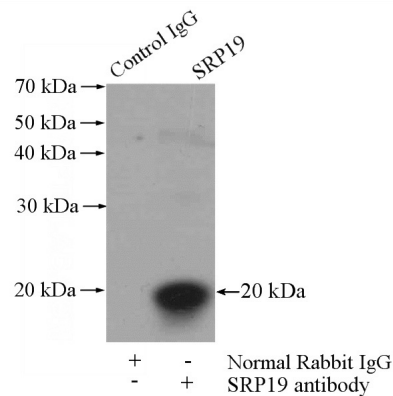
Rabbit IgG

Applications

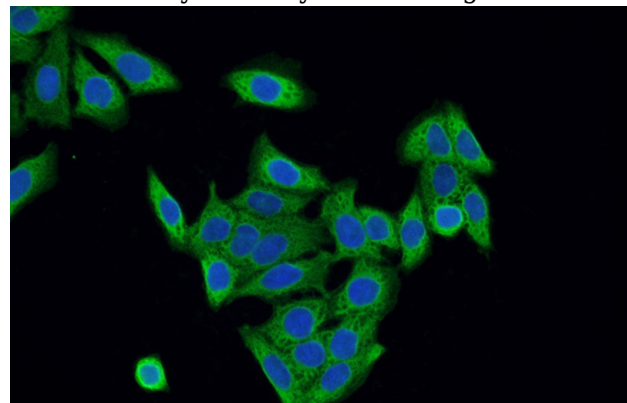
ELISA, WB, IP, IF

Dilutions

Recommended Dilution:



IP Result of anti-SRP19 (IP:Catalog No:115591, 4ug; Detection:Catalog No:115591 1:500) with mouse kidney tissue lysate 4000ug.



SRP19 antibody



Catalog Number: 115591

Immunofluorescent analysis of HeLa cells using 1:50 and Alexa Fluor 488-conjugated AffiniPure
Catalog No:115591(SRP19 Antibody) at dilution of Goat Anti-Rabbit IgG(H+L)