

SRI antibody

Catalog Number: 115589

Product name

SRI antibody

WB: 1:200-1:2000

IP: 1:200-1:2000

Specificity

Human, Mouse, Rat; other species not tested.

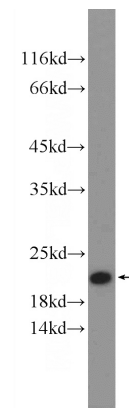
IHC: 1:20-1:200

IF: 1:20-1:200

Antibody description

SRI Rabbit Polyclonal antibody. Positive WB detected in mouse liver tissue, HepG2 cells, human liver tissue, rat liver tissue. Positive IP detected in HepG2 cells. Positive IHC detected in human liver tissue. Positive IF detected in HepG2 cells. Observed molecular weight by Western-blot: 22kd

Validations



Preparation

This antibody was obtained by immunization of SRI recombinant protein (Accession Number: NM_003130). Purification method: Antigen affinity purified.

mouse liver tissue were subjected to SDS PAGE followed by western blot with Catalog No:115589(SRI Antibody) at dilution of 1:600

Formulation

PBS with 0.02% sodium azide and 50% glycerol pH 7.3.

Storage

Store at -20°C. DO NOT ALIQUOT

Clonality

Polyclonal

Ig Type

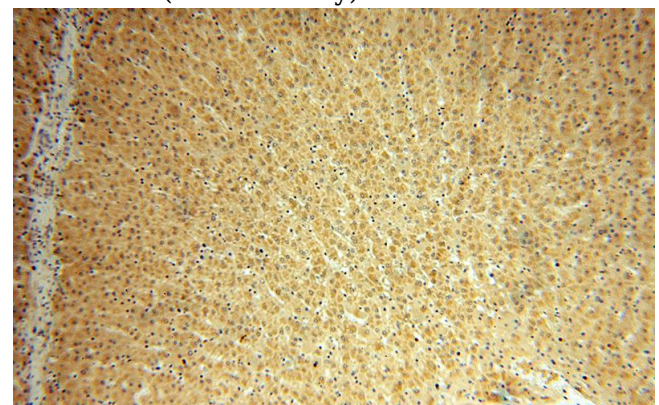
Rabbit IgG

Applications

ELISA, IHC, IP, WB, IF

Dilutions

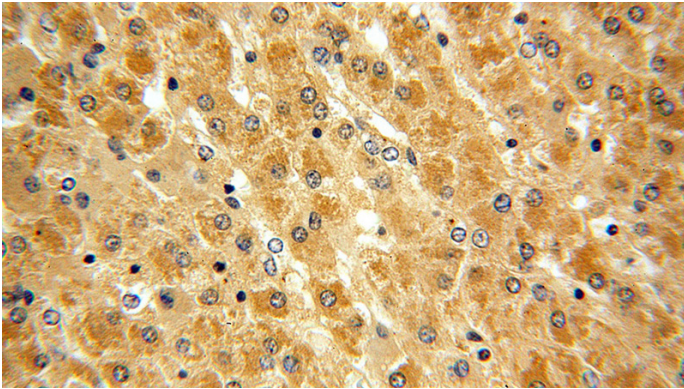
Recommended Dilution:



Immunohistochemical of paraffin-embedded human liver using Catalog No:115589(SRI antibody) at dilution of 1:50 (under 10x lens)

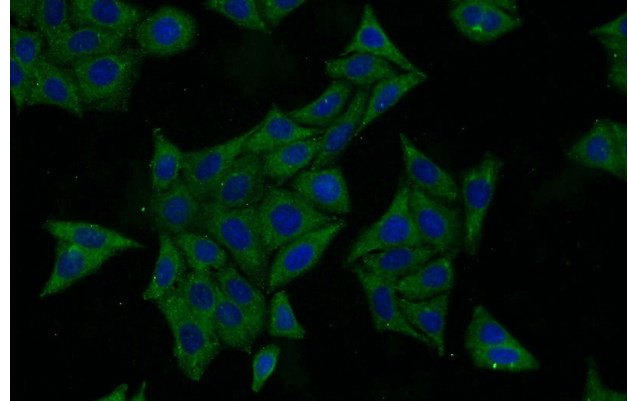
SRI antibody

Catalog Number: 115589



Immunohistochemical of paraffin-embedded human liver using Catalog No:115589(SRI antibody) at dilution of 1:50 (under 40x lens)

IP Result of anti-SRI (IP:Catalog No:115589, 3ug; Detection:Catalog No:115589 1:500) with HepG2 cells lysate 600ug.



Immunofluorescent analysis of HepG2 cells using Catalog No:115589(SRI Antibody) at dilution of 1:50 and Alexa Fluor 488-conjugated AffiniPure Goat Anti-Rabbit IgG(H+L)

