

SRF antibody



Catalog Number: 115583

Product name

SRF antibody

Recommended Dilution:

WB: 1:200-1:1000

Immunogen

[Human SRF Recombinant protein \(His tag\)](#)

IP: 1:500-1:5000

IHC: 1:20-1:200

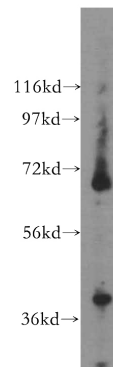
Specificity

Human, Mouse, Rat; other species not tested.

Validations

Antibody description

SRF Rabbit Polyclonal antibody. Positive WB detected in HeLa cells, HEK-293 cells, K-562 cells, MCF-7 cells, NIH/3T3 cells. Positive IP detected in HeLa cells. Positive IHC detected in human brain tissue. Observed molecular weight by Western-blot: 65-70 kDa, 40 kDa



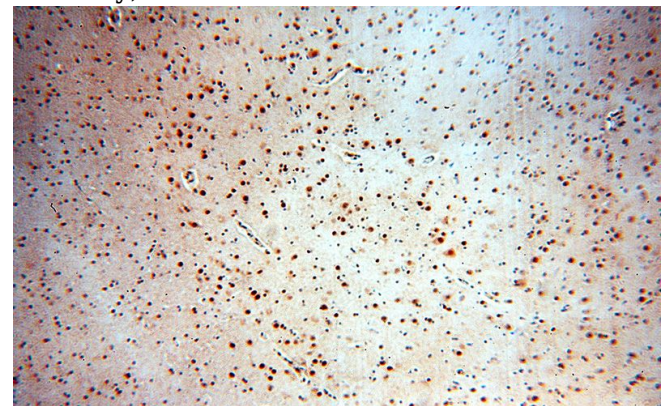
Preparation

This antibody was obtained by immunization of SRF recombinant protein (Accession Number: NM_003131). Purification method: Antigen affinity purified.

HeLa cells were subjected to SDS PAGE followed by western blot with Catalog No:115583(SRF antibody) at dilution of 1:400

Formulation

PBS with 0.02% sodium azide and 50% glycerol pH 7.3.



Storage

Store at -20°C. DO NOT ALIQUOT

Clonality

Polyclonal

Immunohistochemical of paraffin-embedded human brain using Catalog No:115583(SRF antibody) at dilution of 1:50 (under 10x lens)

Ig Type

Rabbit IgG

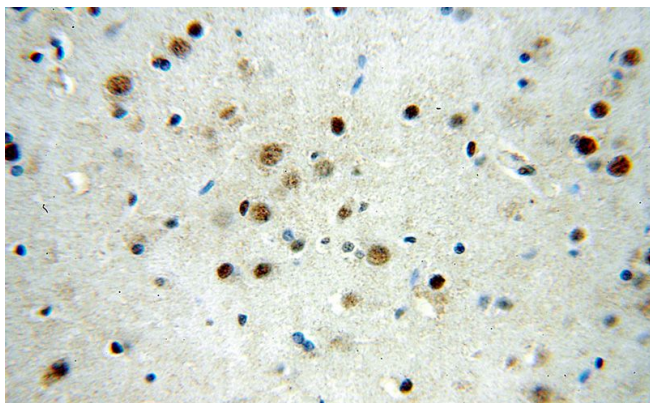
Applications

ELISA, IHC, WB, IP

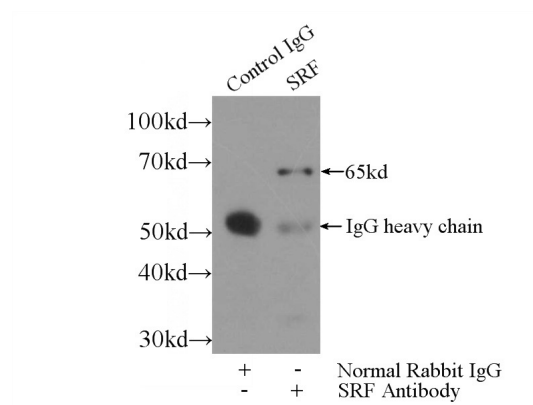
Dilutions

SRF antibody

Catalog Number: 115583



Immunohistochemical of paraffin-embedded human brain using Catalog No:115583(SRF antibody) at dilution of 1:50 (under 40x lens)



IP Result of anti-SRF (IP:Catalog No:115583, 3ug; Detection:Catalog No:115583 1:1000) with HeLa cells lysate 3000ug.