

SREBF2 antibody



Catalog Number: 115582

Product name

SREBF2 antibody

Recommended Dilution:

WB: 1:500-1:5000

Specificity

Human, Mouse, Rat; other species not tested.

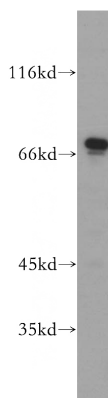
IP: 1:200-1:2000

IHC: 1:20-1:200

Antibody description

SREBF2 Rabbit Polyclonal antibody. Positive IHC detected in human kidney tissue, human brain tissue. Positive WB detected in Jurkat cells, HEK-293 cells, HeLa cells, HepG2 cells, human kidney tissue, mouse kidney tissue, rat kidney tissue, rat liver tissue. Positive IP detected in HeLa cells. Observed molecular weight by Western-blot: 68 kDa

Validations



Preparation

This antibody was obtained by immunization of SREBF2 recombinant protein (Accession Number: NM_004599). Purification method: Antigen affinity purified.

Jurkat cells were subjected to SDS PAGE followed by western blot with Catalog No:115582(SREBF2 antibody) at dilution of 1:1000

Formulation

PBS with 0.02% sodium azide and 50% glycerol pH 7.3.

Storage

Store at -20°C. DO NOT ALIQUOT

Clonality

Polyclonal

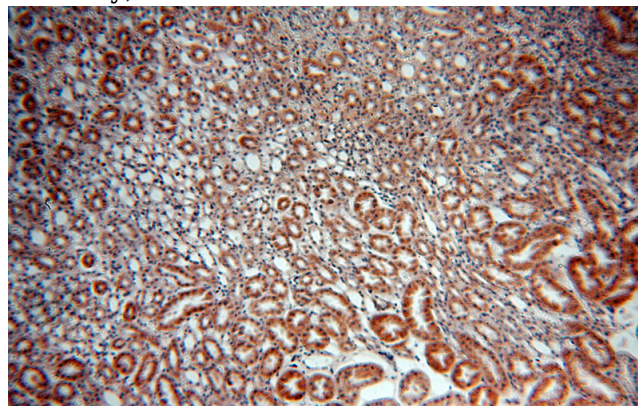
Ig Type

Rabbit IgG

Applications

ELISA, WB, IHC, IP

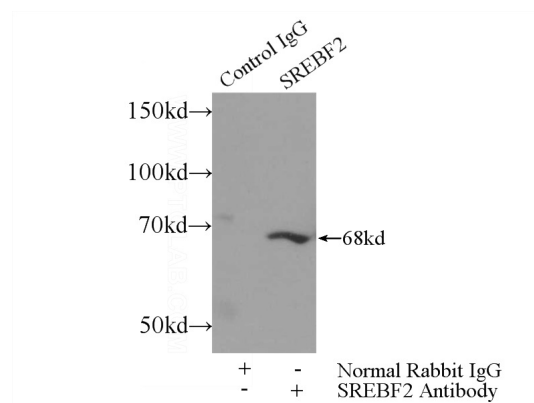
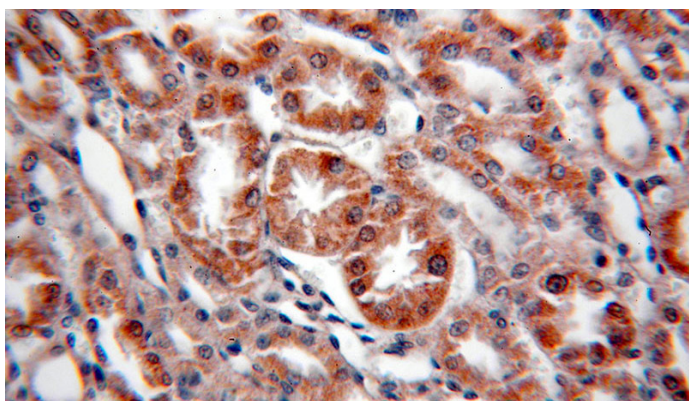
Dilutions



Immunohistochemical of paraffin-embedded human kidney using Catalog No:115582(SREBF2 antibody) at dilution of 1:50 (under 10x lens)

SREBF2 antibody

Catalog Number: 115582



Immunohistochemical of paraffin-embedded human kidney using Catalog No:115582(SREBF2 antibody) at dilution of 1:50 (under 40x lens)

IP Result of anti-SREBF2 (IP:Catalog No:115582, 3ug; Detection:Catalog No:115582 1:500) with HeLa cells lysate 3000ug.