

# SPOCD1 antibody



Catalog Number: 115577

## Product name

SPOCD1 antibody

## Specificity

Human; other species not tested.

## Antibody description

SPOCD1 Rabbit Polyclonal antibody. Positive WB detected in SH-SY5Y cells, HEK-293 cells, human testis tissue. Positive IF detected in SH-SY5Y cells. Observed molecular weight by Western-blot: 100 kDa

## Preparation

This antibody was obtained by immunization of SP<sup>o</sup>CD1 recombinant protein (Accession Number: NM\_001281987). Purification method: Antigen Affinity purified.

## Formulation

PBS with 0.02% sodium azide and 50% glycerol pH 7.3.

## Storage

Store at -20°C. DO NOT ALIQUOT

## Clonality

Polyclonal

## Ig Type

Rabbit IgG

## Applications

ELISA, WB, IF

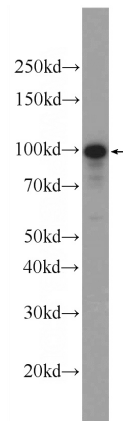
## Dilutions

Recommended Dilution:

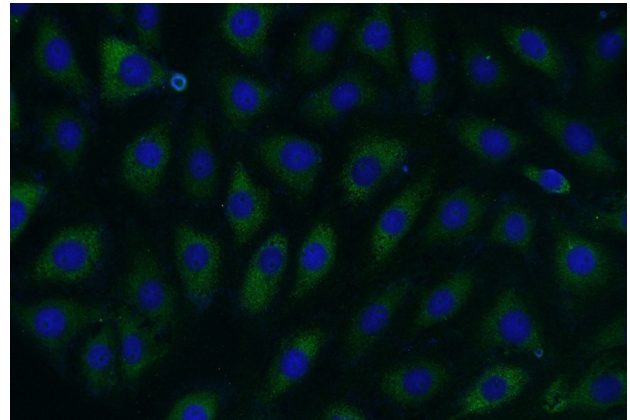
WB: 1:500-1:5000

IF: 1:20-1:200

## Validations



SH-SY5Y cells were subjected to SDS PAGE followed by western blot with Catalog No:115577(SPocD1 Antibody) at dilution of 1:1000



Immunofluorescent analysis of (-20oc Ethanol) fixed SH-SY5Y cells using Catalog No:115577(SPocD1 Antibody) at dilution of 1:50 and Alexa Fluor 488-conjugated AffiniPure Goat Anti-Rabbit IgG(H+L)