

SPHK1-Phospho-Ser225 antibody



Catalog Number: 115566

Product name

SPHK1-Phospho-Ser225 antibody

Specificity

Human; other species not tested.

Antibody description

SPHK1-Phospho-Ser225 Rabbit Polyclonal antibody. Positive WB detected in L02 cells, human testis tissue. Observed molecular weight by Western-blot: 45-47kd

Preparation

This antibody was obtained by immunization of Peptide (Accession Number: NM_182965). Purification method: Antigen affinity purified.

Formulation

PBS with 0.1% sodium azide and 50% glycerol pH 7.3.

Storage

Store at -20°C. DO NOT ALIQUOT

Clonality

Polyclonal

Ig Type

Rabbit IgG

Applications

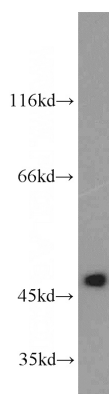
ELISA, WB

Dilutions

Recommended Dilution:

WB: 1:200-1:2000

Validations



L02 cells were subjected to SDS PAGE followed by western blot with Catalog No:115566(SPHK1-Phospho-Ser225 antibody) at dilution of 1:500