

Spermidine synthase antibody



Catalog Number: 115562

Product name

Spermidine synthase antibody

IP: 1:200-1:2000

IF: 1:10-1:100

Specificity

Human, Mouse, Rat; other species not tested.

Antibody description

Spermidine synthase Rabbit Polyclonal antibody. Positive WB detected in PC-3 cells, HeLa cells, HepG2 cells, human brain tissue, mouse liver tissue. Positive IP detected in mouse liver tissue. Positive IF detected in HepG2 cells. Observed molecular weight by Western-blot: 34 kDa

Preparation

This antibody was obtained by immunization of Spermidine synthase recombinant protein (Accession Number: NM_003132). Purification method: Antigen affinity purified.

Formulation

PBS with 0.02% sodium azide and 50% glycerol pH 7.3.

Storage

Store at -20°C. DO NOT ALIQUOT

Clonality

Polyclonal

Ig Type

Rabbit IgG

Applications

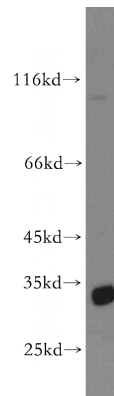
ELISA, WB, IF, IP

Dilutions

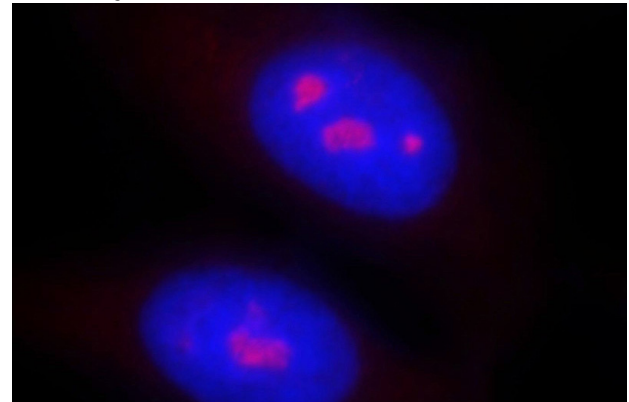
Recommended Dilution:

WB: 1:200-1:2000

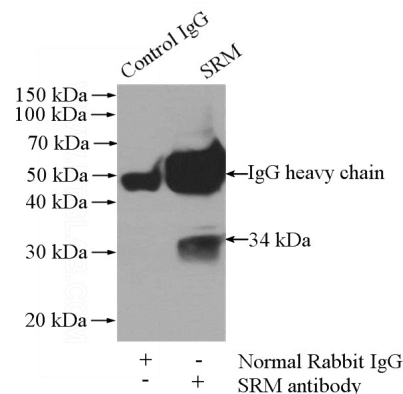
Validations



PC-3 cells were subjected to SDS PAGE followed by western blot with Catalog No:115562(SRM antibody) at dilution of 1:500



Immunofluorescent analysis of HepG2 cells, using SRM antibody Catalog No:115562 at 1:25 dilution and Rhodamine-labeled goat anti-rabbit IgG (red). Blue pseudocolor = DAPI (fluorescent DNA dye).



IP Result of anti-SRM (IP:Catalog No:115562, 4ug;

Spermidine synthase antibody



Catalog Number: 115562

Detection: Catalog No: 115562 (1:500) with mouse liver tissue lysate 4000ug.