

SPATA2 antibody



Catalog Number: 115551

Product name

SPATA2 antibody

Specificity

human, mouse, rat; other species not tested.

Antibody description

SPATA2 Rabbit Polyclonal antibody. Positive WB detected in human lung tissue. Positive IHC detected in human prostate cancer. Observed molecular weight by Western-blot: 60kd

Preparation

This antibody was obtained by immunization of SPATA2 recombinant protein (Accession Number: XM_047440623). Purification method: Antigen affinity purified.

Formulation

PBS with 0.1% sodium azide and 50% glycerol pH 7.3.

Storage

Store at -20°C. DO NOT ALIQUOT

Clonality

Polyclonal

Ig Type

Rabbit IgG

Applications

ELISA, WB, IHC

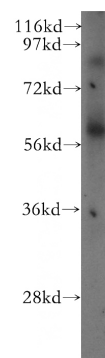
Dilutions

Recommended Dilution:

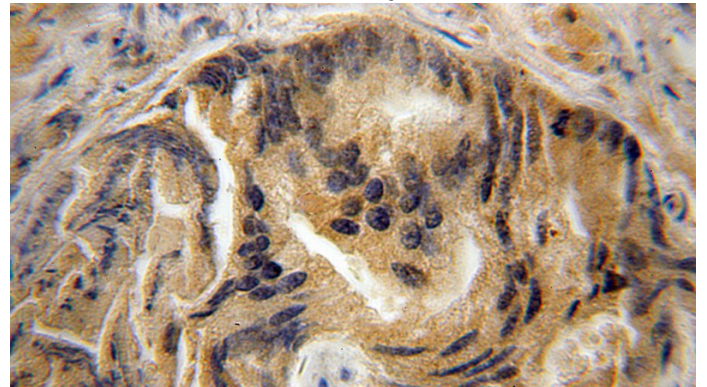
WB: 1:200-1:2000

IHC: 1:20-1:200

Validations



human lung tissue were subjected to SDS PAGE followed by western blot with Catalog No:115551(SPATA2 antibody) at dilution of 1:800



Immunohistochemical of paraffin-embedded human prostate cancer using Catalog No:115551(SPATA2 antibody) at dilution of 1:100 (under 10x lens)