

# SORLA antibody



Catalog Number: 115506

## Product name

SORLA antibody

## Immunogen

[Human SORL1 Recombinant protein \(His tag\)](#)

## Specificity

Human, Mouse, Rat; other species not tested.

## Antibody description

SORLA Rabbit Polyclonal antibody. Positive IHC detected in human brain tissue, rat brain tissue. Positive IP detected in mouse brain tissue. Observed molecular weight by Western-blot: 300 kDa

## Preparation

This antibody was obtained by immunization of SORLA recombinant protein (Accession Number: NM\_003105). Purification method: Antigen Affinity purified.

## Formulation

PBS with 0.02% sodium azide and 50% glycerol pH 7.3.

## Storage

Store at -20°C. DO NOT ALIQUOT

## Clonality

Polyclonal

## Ig Type

Rabbit IgG

## Applications

ELISA, IP, IHC

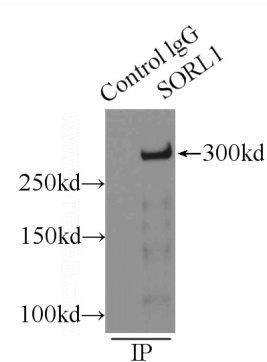
## Dilutions

Recommended Dilution:

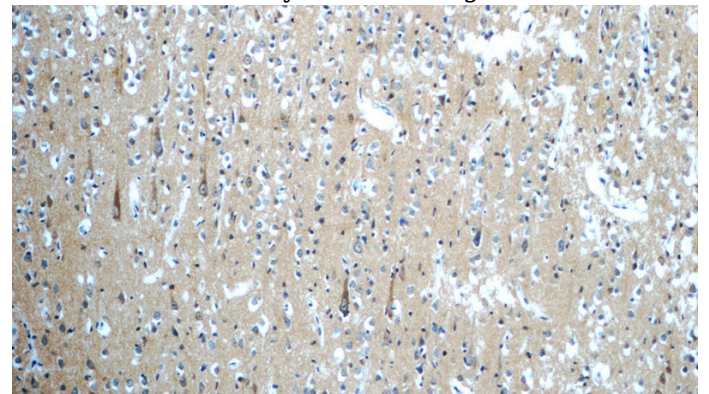
IP: 1:200-1:2000

IHC: 1:20-1:200

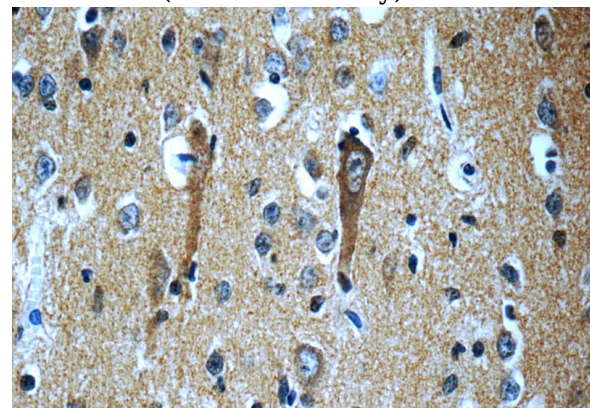
## Validations



IP Result of anti-SORL1 (IP:Catalog No:115506, 5ug; Detection:Catalog No:115506 1:500) with mouse brain tissue lysate 10000ug.



Immunohistochemistry of paraffin-embedded human brain slide using Catalog No:115506(SORL1 Antibody) at dilution of 1:50



# SORLA antibody



Catalog Number: 115506

---

Immunohistochemistry of paraffin-embedded

human brain slide using Catalog  
No:115506(SORL1 Antibody) at dilution of 1:50