

SORCS1 antibody



Catalog Number: 115504

Product name

SORCS1 antibody

Specificity

Human, Mouse; other species not tested.

Antibody description

SORCS1 Rabbit Polyclonal antibody. Positive FC detected in HeLa cells. Positive IHC detected in human brain tissue. Positive WB detected in mouse brain tissue, HEK-293 cells, human brain tissue, K-562 cells, mouse kidney tissue. Observed molecular weight by Western-blot: 60-80 kDa

Preparation

This antibody was obtained by immunization of SORCS1 recombinant protein (Accession Number: NM_052918). Purification method: Antigen Affinity purified.

Formulation

PBS with 0.02% sodium azide and 50% glycerol pH 7.3.

Storage

Store at -20°C. DO NOT ALIQUOT

Clonality

Polyclonal

Ig Type

Rabbit IgG

Applications

ELISA, WB, IHC, FC

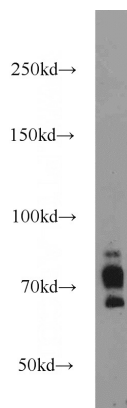
Dilutions

Recommended Dilution:

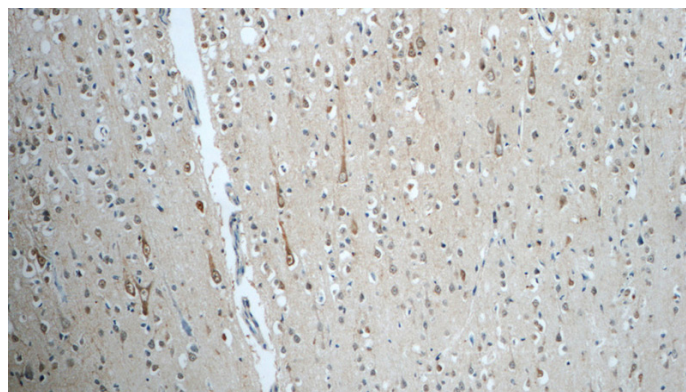
WB: 1:200-1:2000

IHC: 1:20-1:200

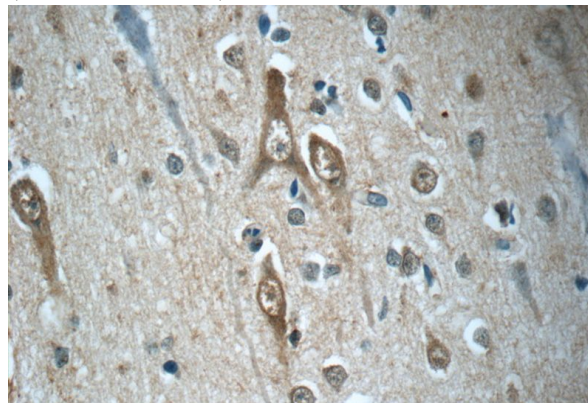
Validations



mouse brain tissue were subjected to SDS PAGE followed by western blot with Catalog No:115504(SORCS1 antibody) at dilution of 1:1000



Immunohistochemistry of paraffin-embedded human brain tissue slide using Catalog No:115504(SORCS1 Antibody) at dilution of 1:50 (under 10x lens)



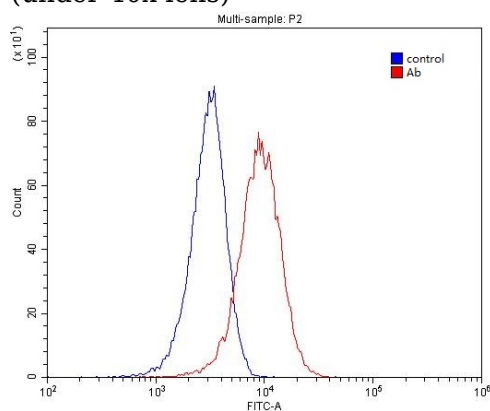
Immunohistochemistry of paraffin-embedded human brain tissue slide using Catalog

SORCS1 antibody



Catalog Number: 115504

No:115504(SORCS1 Antibody) at dilution of 1:50
(under 40x lens)



1×10^6 HeLa cells were stained with 0.2ug SORCS1 antibody (Catalog No:115504, red) and control antibody (blue). Fixed with 4% PFA blocked with 3% BSA (30 min). Alexa Fluor 488-conjugated AffiniPure Goat Anti-Rabbit IgG(H+L) with dilution 1:1500.