

# SORCS1 antibody



Catalog Number: 115503

## Product name

SORCS1 antibody

## Specificity

Human, Mouse; other species not tested.

## Antibody description

SORCS1 Rabbit Polyclonal antibody. Positive FC detected in HeLa cells. Positive WB detected in Y79 cells, HEK-293 cells, mouse brain tissue. Observed molecular weight by Western-blot: 130 kDa, 60-80 kDa

## Preparation

This antibody was obtained by immunization of Peptide (Accession Number: NM\_052918). Purification method: Antigen affinity purified.

## Formulation

PBS with 0.1% sodium azide and 50% glycerol pH 7.3.

## Storage

Store at -20°C. DO NOT ALIQUOT

## Clonality

Polyclonal

## Ig Type

Rabbit IgG

## Applications

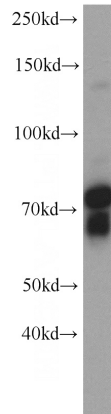
ELISA, WB, FC

## Dilutions

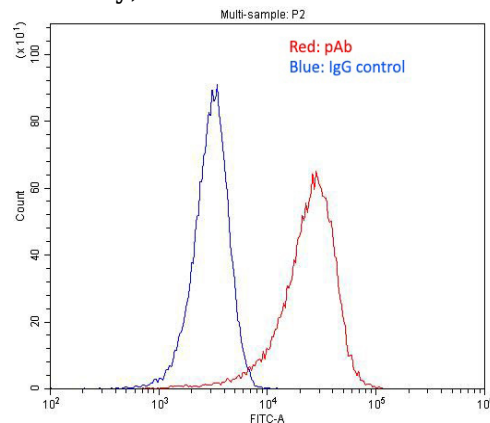
Recommended Dilution:

WB: 1:200-1:2000

## Validations



Y79 cells were subjected to SDS PAGE followed by western blot with Catalog No:115503(SORCS1 antibody) at dilution of 1:500



1X10<sup>6</sup> HeLa cells were stained with 0.2ug SORCS1 antibody (Catalog No:115503, red) and control antibody (blue). Fixed with 4% PFA blocked with 3% BSA (30 min). Alexa Fluor 488-conjugated AffiniPure Goat Anti-Rabbit IgG(H+L) with dilution 1:1500.