

# SORBS1 antibody

Catalog Number: 115501

## Product name

SORBS1 antibody

## Immunogen

[Human SORBS1 Recombinant protein \(GST tag\)](#)

## Specificity

Human, Mouse; other species not tested.

## Antibody description

SORBS1 Rabbit Polyclonal antibody. Positive IP detected in mouse liver tissue. Positive WB detected in 3T3-L1 cells, HEK-293 cells, mouse kidney tissue, mouse liver tissue. Observed molecular weight by Western-blot: 70-75 kDa

## Preparation

This antibody was obtained by immunization of SORBS1 recombinant protein (Accession Number: BC042612). Purification method: Antigen affinity purified.

## Formulation

PBS with 0.1% sodium azide and 50% glycerol pH 7.3.

## Storage

Store at -20°C. DO NOT ALIQUOT

## Clonality

Polyclonal

## Ig Type

Rabbit IgG

## Applications

ELISA, WB, IP

## Dilutions

Recommended Dilution:

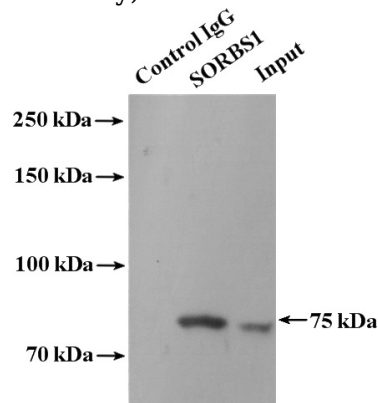
WB: 1:200-1:2000

IP: 1:200-1:2000

## Validations



3T3-L1 cells were subjected to SDS PAGE followed by western blot with Catalog No:115501(SORBS1 antibody) at dilution of 1:800



IP Result of anti-SORBS1 (IP:Catalog No:115501, 4ug; Detection:Catalog No:115501 1:800) with mouse liver tissue lysate 4800ug.