

# Sorbitol dehydrogenase antibody



Catalog Number: 115500

## Product name

Sorbitol dehydrogenase antibody

## Specificity

Human, Mouse, Rat; other species not tested.

## Antibody description

Sorbitol dehydrogenase Rabbit Polyclonal antibody. Positive IP detected in mouse liver tissue. Positive WB detected in HeLa cells, human kidney tissue, rat liver tissue. Observed molecular weight by Western-blot: 38 kDa

## Preparation

This antibody was obtained by immunization of Sorbitol dehydrogenase recombinant protein (Accession Number: NM\_003104). Purification method: Antigen affinity purified.

## Formulation

PBS with 0.02% sodium azide and 50% glycerol pH 7.3.

## Storage

Store at -20°C. DO NOT ALIQUOT

## Clonality

Polyclonal

## Ig Type

Rabbit IgG

## Applications

ELISA, WB, IP

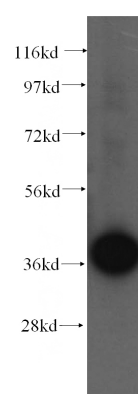
## Dilutions

Recommended Dilution:

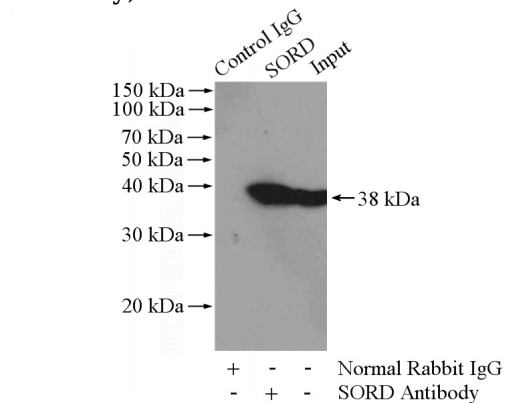
WB: 1:1000-1:10000

IP: 1:500-1:5000

## Validations



HeLa cells were subjected to SDS PAGE followed by western blot with Catalog No:115500(SORD antibody) at dilution of 1:500



IP Result of anti-SORD (IP:Catalog No:115500, 4ug; Detection:Catalog No:115500 1:1000) with mouse liver tissue lysate 4000ug.