

SOLO antibody

Catalog Number: 115498

Product name

SOLO antibody

Immunogen

[Human SESTD1 Recombinant protein \(GST tag\)](#)

Specificity

Human, Mouse, Rat; other species not tested.

Antibody description

SOLO Rabbit Polyclonal antibody. Positive IP detected in mouse brain tissue. Positive WB detected in Jurkat cells, HepG2 cells, MCF-7 cells, mouse brain tissue, rat brain tissue. Positive IF detected in HepG2 cells. Observed molecular weight by Western-blot: 70 kDa

Preparation

This antibody was obtained by immunization of SOLO recombinant protein (Accession Number: XM_011512139). Purification method: Antigen Affinity purified.

Formulation

PBS with 0.02% sodium azide and 50% glycerol pH 7.3.

Storage

Store at -20°C. DO NOT ALIQUOT

Clonality

Polyclonal

Ig Type

Rabbit IgG

Applications

ELISA, WB, IF, IP

Dilutions

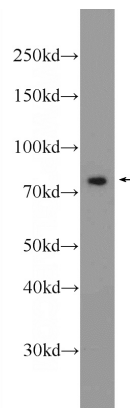
Recommended Dilution:

WB: 1:500-1:5000

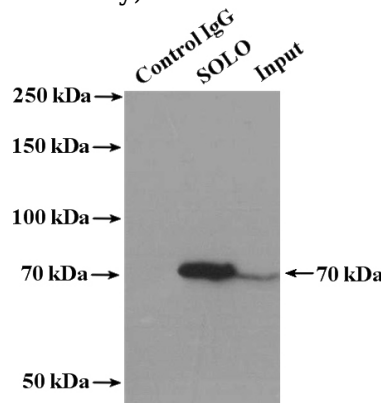
IP: 1:500-1:5000

IF: 1:20-1:200

Validations



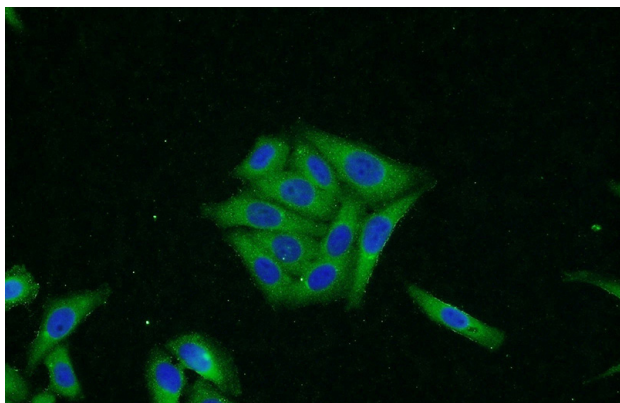
Jurkat cells were subjected to SDS PAGE followed by western blot with Catalog No:115498(SESTD1 Antibody) at dilution of 1:1000



IP Result of anti-SESTD1 (IP:Catalog No:115498, 4ug; Detection:Catalog No:115498 1:1000) with mouse brain tissue lysate 3000ug.

SOLO antibody

Catalog Number: 115498



Immunofluorescent analysis of HepG2 cells using Catalog No:115498(SESTD1 Antibody) at dilution of 1:50 and Alexa Fluor 488-conjugated AffiniPure Goat Anti-Rabbit IgG(H+L)