

Sodium iodide symporter antibody



Catalog Number: 115496

Product name

Sodium iodide symporter antibody

Recommended Dilution:

WB: 1:200-1:2000

Specificity

Human, Mouse, Rat; other species not tested.

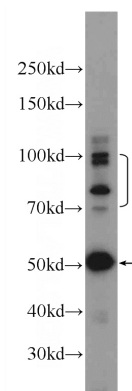
IP: 1:200-1:2000

IHC: 1:20-1:200

Antibody description

Sodium iodide symporter Rabbit Polyclonal antibody. Positive IP detected in mouse testis tissue. Positive WB detected in mouse testis tissue, mouse stomach tissue, SGC-7901 cells. Positive IHC detected in human thyroid cancer tissue, human ovary tissue. Positive FC detected in MCF-7 cells. Observed molecular weight by Western-blot: 50-55, 75-100 kDa

Validations



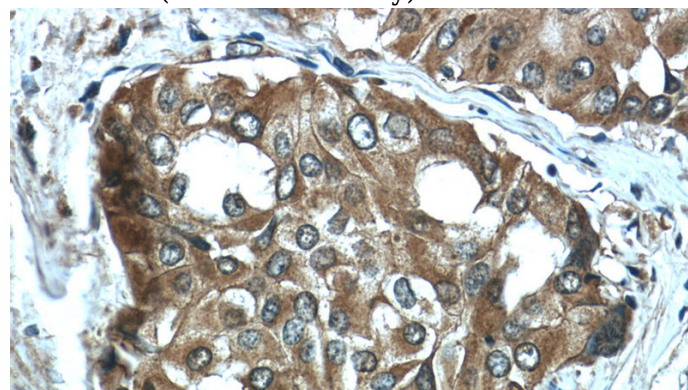
Preparation

This antibody was obtained by immunization of Sodium iodide symporter recombinant protein (Accession Number: NM_000453). Purification method: Antigen affinity purified.

mouse testis tissue were subjected to SDS PAGE followed by western blot with Catalog No:115496(SLC5A5 Antibody) at dilution of 1:600

Formulation

PBS with 0.1% sodium azide and 50% glycerol pH 7.3.



Storage

Store at -20°C. DO NOT ALIQUOT

Clonality

Polyclonal

Ig Type

Rabbit IgG

Applications

ELISA, WB, FC, IHC, IP

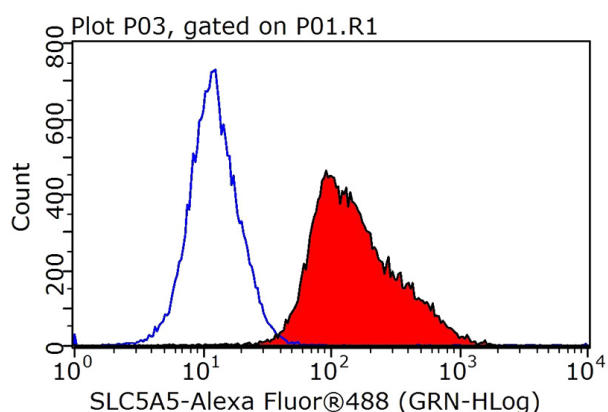
Immunohistochemistry of paraffin-embedded human thyroid cancer tissue slide using Catalog No:115496(SLC5A5 Antibody) at dilution of 1:50 (under 40x lens)

Dilutions

Sodium iodide symporter antibody

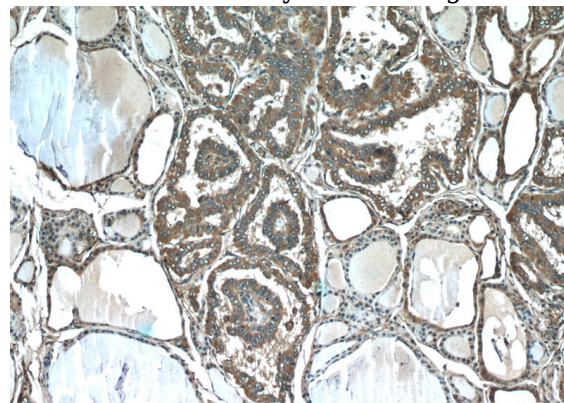


Catalog Number: 115496



1X10⁶ MCF-7 cells were stained with 0.2ug SLC5A5 antibody (Catalog No:115496, red) and control antibody (blue). Fixed with 90% MeOH blocked with 3% BSA (30 min). Alexa Fluor 488-conjugated AffiniPure Goat Anti-Rabbit IgG(H+L) with dilution 1:100.

IP Result of anti-SLC5A5 (IP:Catalog No:115496, 4ug; Detection:Catalog No:115496 1:500) with mouse testis tissue lysate 4000ug.



Immunohistochemistry of paraffin-embedded human thyroid cancer tissue slide using Catalog No:115496(SLC5A5 Antibody) at dilution of 1:50 (under 10x lens)

