

# SOD2 antibody



Catalog Number: 115493

## Product name

SOD2 antibody

Recommended Dilution:

WB: 1:500-1:5000

## Specificity

Human, Mouse, Rat; other species not tested.

IP: 1:500-1:5000

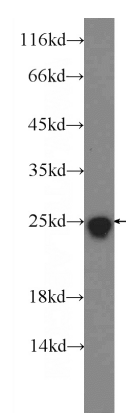
IHC: 1:20-1:200

## Antibody description

SOD2 Rabbit Polyclonal antibody. Positive IF detected in HUVEC cells. Positive IHC detected in human breast cancer tissue, human brain tissue, human small intestine tissue. Positive WB detected in HeLa cells, DU 145 cells, MCF7 cells, mouse brain tissue, rat brain tissue. Positive IP detected in mouse brain tissue. Observed molecular weight by Western-blot: 25 kDa

IF: 1:20-1:200

## Validations



## Preparation

This antibody was obtained by immunization of SOD2 recombinant protein (Accession Number: NM\_001322816). Purification method: Antigen Affinity purified.

HeLa cells were subjected to SDS PAGE followed by western blot with Catalog No:115493(SOD2 antibody) at dilution of 1:1000

## Formulation

PBS with 0.02% sodium azide and 50% glycerol pH 7.3.

## Storage

Store at -20°C. DO NOT ALIQUOT

## Clonality

Polyclonal

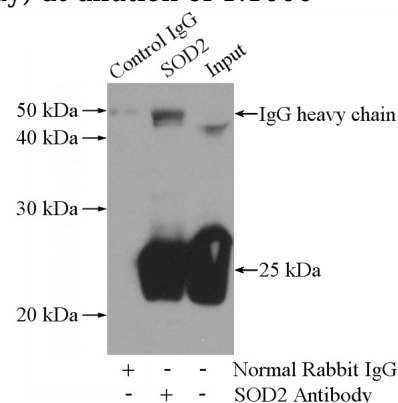
## Ig Type

Rabbit IgG

## Applications

ELISA, WB, IF, IHC, IP

## Dilutions

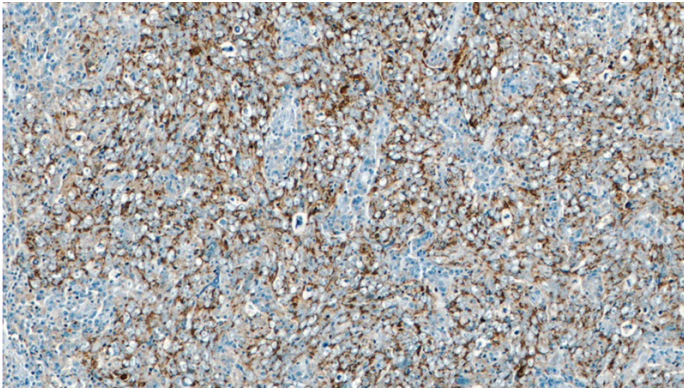


IP Result of anti-SOD2 (IP:Catalog No:115493, 4ug; Detection:Catalog No:115493 1:1000) with mouse brain tissue lysate 4000ug.

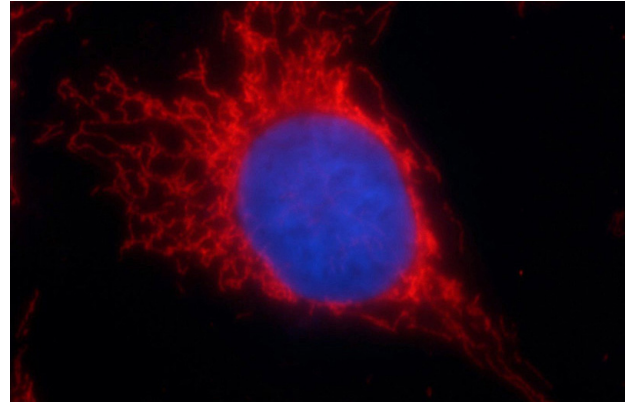
# SOD2 antibody

Catalog Number: 115493

---



Immunohistochemistry of paraffin-embedded human breast cancer tissue slide using Catalog No:115493(SOD2 Antibody) at dilution of 1:50 (under 40x lens)



Immunofluorescent analysis of HUVEC cells using Catalog No:115493(SOD2 Antibody) at dilution of 1:50 and Rhodamine-Goat anti-Rabbit IgG

