

SOCS1 antibody

Catalog Number: 115488

Product name

SOCS1 antibody

Specificity

Human; other species not tested.

Antibody description

SOCS1 Rabbit Polyclonal antibody. Positive IF detected in HeLa cells. Positive IHC detected in human placenta tissue. Positive WB detected in Transfected HEK-293 cells.

Preparation

This antibody was obtained by immunization of S^oCS1 recombinant protein (Accession Number: NM_003745). Purification method: Antigen affinity purified.

Formulation

PBS with 0.1% sodium azide and 50% glycerol pH 7.3.

Storage

Store at -20°C. DO NOT ALIQUOT

Clonality

Polyclonal

Ig Type

Rabbit IgG

Applications

ELISA, IHC, IF, WB

Dilutions

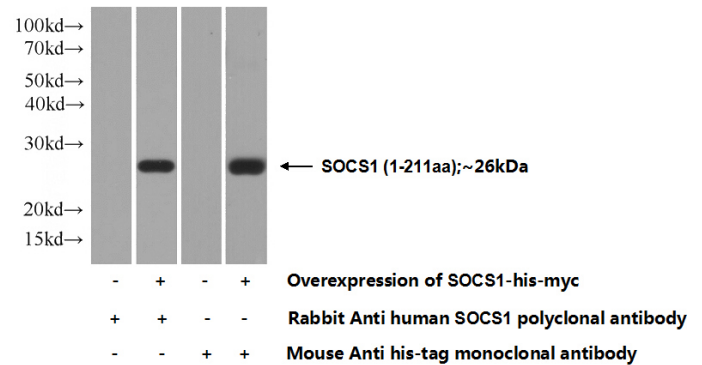
Recommended Dilution:

WB: 1:500-1:5000

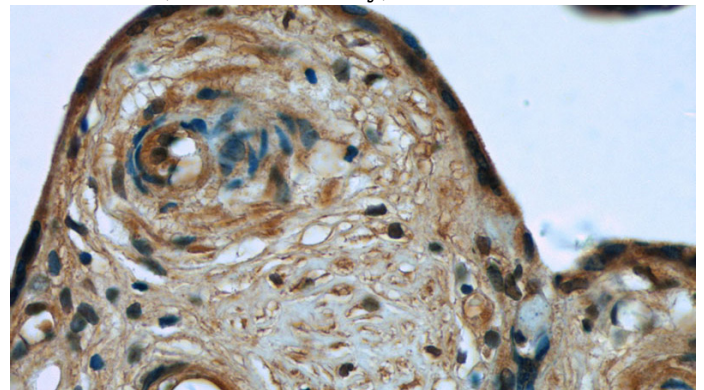
IHC: 1:20-1:200

IF: 1:10-1:100

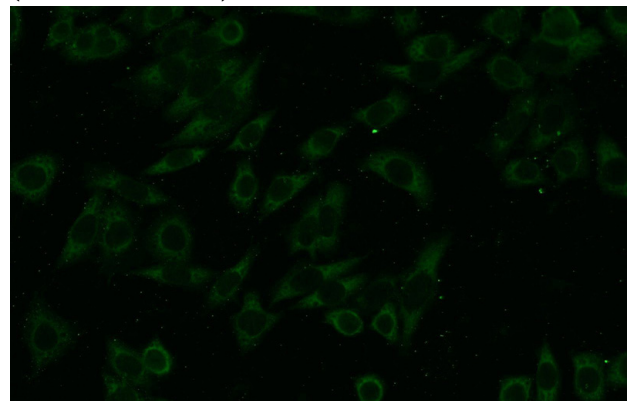
Validations



Transfected HEK-293 cells were subjected to SDS PAGE followed by western blot with Catalog No:115488(SocS1 Antibody) at dilution of 1:1000



Immunohistochemistry of paraffin-embedded human placenta tissue slide using Catalog No:115488(SocS1 Antibody) at dilution of 1:50 (under 40x lens)



Immunofluorescent analysis of HeLa cells using Catalog No:115488(SocS1 Antibody) at dilution of 1:25 and Alexa Fluor 488-conjugated AffiniPure Goat Anti-Rabbit IgG(H+L)