

SNRPF antibody

Catalog Number: 115464

Product name

SNRPF antibody

WB: 1:500-1:5000

IHC: 1:20-1:200

Specificity

Human, Mouse, Rat; other species not tested.

Antibody description

SNRPF Rabbit Polyclonal antibody. Positive WB detected in human heart tissue, HeLa cells, HepG2 cells, MCF7 cells, mouse kidney tissue, mouse liver tissue. Positive IHC detected in human breast cancer tissue. Positive FC detected in MCF-7 cells. Observed molecular weight by Western-blot: 10kd

Preparation

This antibody was obtained by immunization of SNRPF recombinant protein (Accession Number: NM_003095). Purification method: Antigen affinity purified.

Formulation

PBS with 0.02% sodium azide and 50% glycerol pH 7.3.

Storage

Store at -20°C. DO NOT ALIQUOT

Clonality

Polyclonal

Ig Type

Rabbit IgG

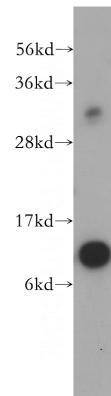
Applications

ELISA, WB, IHC, FC

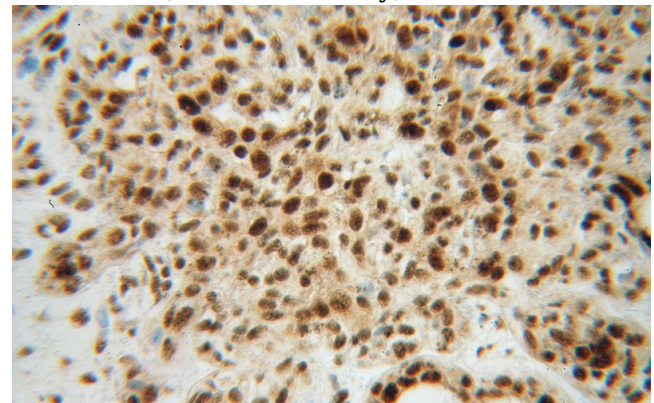
Dilutions

Recommended Dilution:

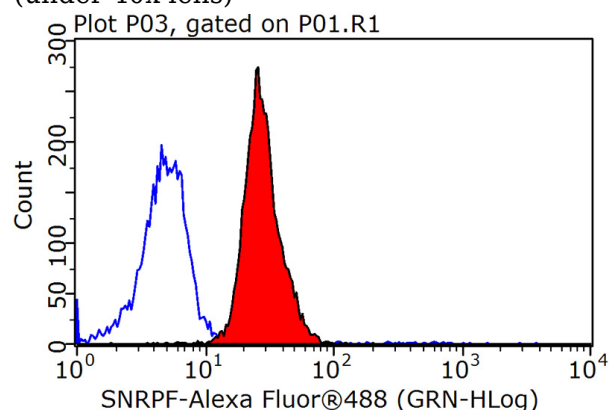
Validations



human heart tissue were subjected to SDS PAGE followed by western blot with Catalog No:115464(SNRPF antibody) at dilution of 1:500



Immunohistochemical of paraffin-embedded human breast cancer using Catalog No:115464(SNRPF antibody) at dilution of 1:100 (under 40x lens)



1X10⁶ MCF-7 cells were stained with 0.2ug

SNRPF antibody



Catalog Number: 115464

SNRPF antibody (Catalog No:115464, red) and control antibody (blue). Fixed with 90% MeOH blocked with 3% BSA (30 min). Alexa Fluor 488-

conjugated AffiniPure Goat Anti-Rabbit IgG(H+L) with dilution 1:1500.