

SNCB antibody



Catalog Number: 115451

Product name

SNCB antibody

WB: 1:200-1:2000

IHC: 1:10-1:100

Specificity

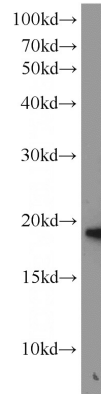
Human, Mouse, Rat; other species not tested.

IF: 1:10-1:100

Antibody description

SNCB Rabbit Polyclonal antibody. Positive FC detected in HepG2 cells. Positive IF detected in HepG2 cells. Positive IHC detected in human breast cancer tissue. Positive WB detected in mouse brain tissue, human brain tissue, rat brain tissue. Observed molecular weight by Western-blot: 14-18kd

Validations



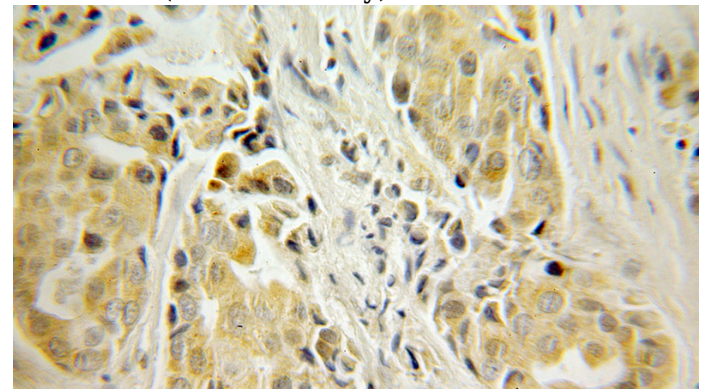
Preparation

This antibody was obtained by immunization of SNCB recombinant protein (Accession Number: XM_006714916). Purification method: Antigen affinity purified.

mouse brain tissue were subjected to SDS PAGE followed by western blot with Catalog No:115451(SNCB antibody) at dilution of 1:600

Formulation

PBS with 0.1% sodium azide and 50% glycerol pH 7.3.



Storage

Store at -20°C. DO NOT ALIQUOT

Clonality

Polyclonal

Immunohistochemical of paraffin-embedded human breast cancer using Catalog No:115451(SNCB antibody) at dilution of 1:10 (under 10x lens)

Ig Type

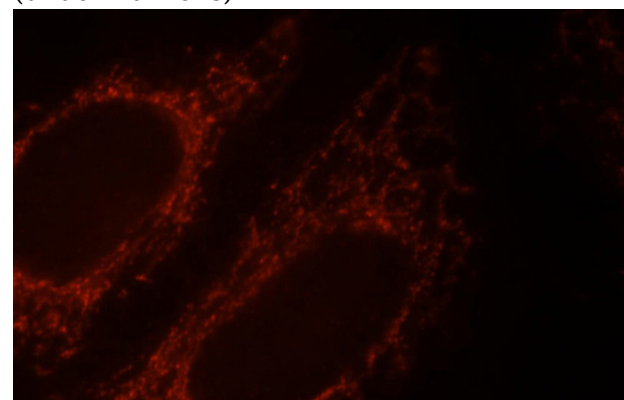
Rabbit IgG

Applications

ELISA, WB, IHC, IF, FC

Dilutions


Recommended Dilution:



SNCB antibody



Catalog Number: 115451

Immunofluorescent analysis of HepG2 cells, using SNCB antibody Catalog No:115451 at 1:25 dilution and Rhodamine-labeled goat anti-rabbit IgG (red).

1X10⁶ HepG2 cells were stained with 0.2ug

SNCB antibody (Catalog No:115451, red) and control antibody (blue). Fixed with 90% MeOH blocked with 3% BSA (30 min). Alexa Fluor 488-conjugated AffiniPure Goat Anti-Rabbit IgG(H+L) with dilution 1:1000.