

SNAI1 antibody

Catalog Number: 115441

Product name

SNAI1 antibody

WB: 1:500-1:5000

IP: 1:200-1:2000

Specificity

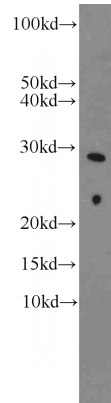
Human, Mouse, Rat; other species not tested.

IHC: 1:20-1:200

Antibody description

SNAI1 Rabbit Polyclonal antibody. Positive WB detected in mouse kidney tissue, COLO 320 cells, HeLa cells, human heart tissue, mouse heart tissue, NIH/3T3 cells. Positive IP detected in MCF-7 cells. Positive IHC detected in human kidney tissue. Observed molecular weight by Western-blot: 29 kDa

Validations



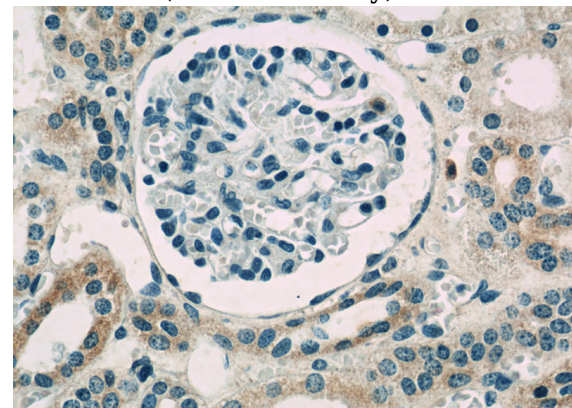
Preparation

This antibody was obtained by immunization of SNAI1 recombinant protein (Accession Number: NM_005985). Purification method: Antigen affinity purified.

mouse kidney tissue were subjected to SDS PAGE followed by western blot with Catalog No:115441(SNAI1 antibody) at dilution of 1:1000

Formulation

PBS with 0.1% sodium azide and 50% glycerol pH 7.3.



Storage

Store at -20°C. DO NOT ALIQUOT

Immunohistochemistry of paraffin-embedded human kidney slide using Catalog No:115441(SNAI1 Antibody) at dilution of 1:50

Clonality

Polyclonal

Ig Type

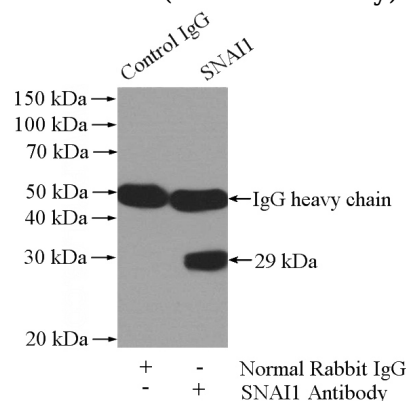
Rabbit IgG

Applications

ELISA, WB, IHC, IP

Dilutions

Recommended Dilution:



SNAI1 antibody



Catalog Number: 115441

IP Result of anti-SNAI1 (IP:Catalog No:115441,

4ug; Detection:Catalog No:115441 1:600) with
MCF-7 cells lysate 1040ug.