

SMYD4 antibody



Catalog Number: 115439

Product name

SMYD4 antibody

WB: 1:500-1:5000

IP: 1:200-1:2000

Specificity

Human, Mouse, Rat; other species not tested.

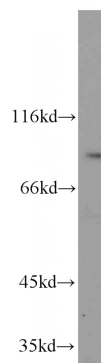
IHC: 1:20-1:200

IF: 1:50-1:500

Antibody description

SMYD4 Rabbit Polyclonal antibody. Positive WB detected in HepG2 cells, mouse brain tissue. Positive IP detected in mouse brain tissue. Positive IF detected in HepG2 cells. Positive IHC detected in human pancreas tissue, human hepat°Cirrhosis tissue. Observed molecular weight by Western-blot: 89 kDa

Validations



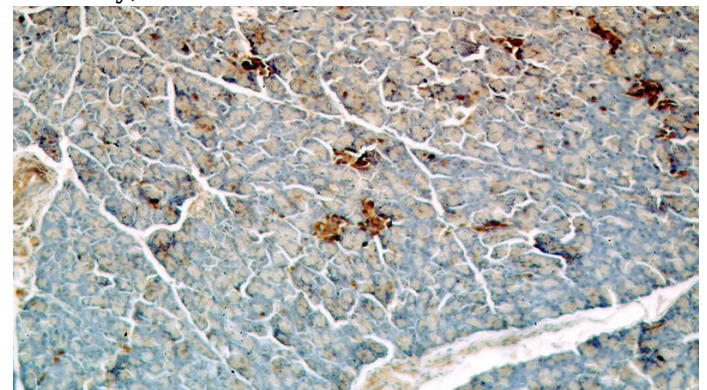
Preparation

This antibody was obtained by immunization of SMYD4 recombinant protein (Accession Number: XM_024450560). Purification method: Antigen affinity purified.

HepG2 cells were subjected to SDS PAGE followed by western blot with Catalog No:115439(SMYD4 antibody) at dilution of 1:300

Formulation

PBS with 0.02% sodium azide and 50% glycerol pH 7.3.



Storage

Store at -20°C. DO NOT ALIQUOT

Clonality

Polyclonal

Ig Type

Rabbit IgG

Applications

ELISA, WB, IHC, IP, IF

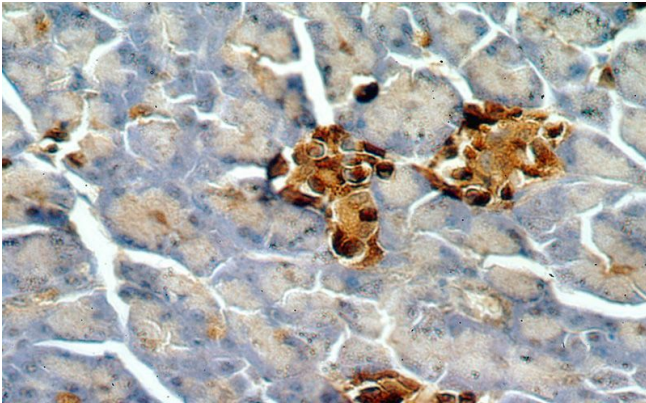
Dilutions

Recommended Dilution:

Immunohistochemical of paraffin-embedded human pancreas using Catalog No:115439(SMYD4 antibody) at dilution of 1:50 (under 10x lens)

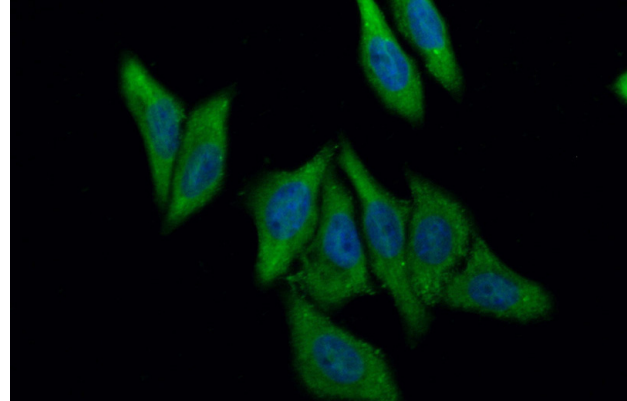
SMYD4 antibody

Catalog Number: 115439



Immunohistochemical of paraffin-embedded human pancreas using Catalog No:115439(SMYD4 antibody) at dilution of 1:50 (under 40x lens)

IP Result of anti-SMYD4 (IP:Catalog No:115439, 4ug; Detection:Catalog No:115439 1:500) with mouse brain tissue lysate 4000ug.



Immunofluorescent analysis of (-20oc Ethanol) fixed HepG2 cells using Catalog No:115439(SMYD4 Antibody) at dilution of 1:50 and Alexa Fluor 488-conjugated AffiniPure Goat Anti-Rabbit IgG(H+L)

