

SMARCC1 antibody



Catalog Number: 115432

Product name

SMARCC1 antibody

Recommended Dilution:

WB: 1:500-1:5000

Specificity

Human, Mouse, Rat; other species not tested.

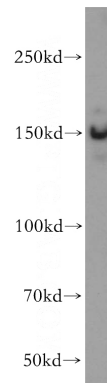
IP: 1:200-1:2000

IHC: 1:20-1:200

Antibody description

SMARCC1 Rabbit Polyclonal antibody. Positive IP detected in mouse brain tissue. Positive WB detected in K-562 cells, Jurkat cells, rat brain tissue, rat testis tissue. Positive IHC detected in human kidney tissue, human brain tissue, human ovary tissue, human placenta tissue, human testis tissue. Observed molecular weight by Western-blot: 155 kDa

Validations



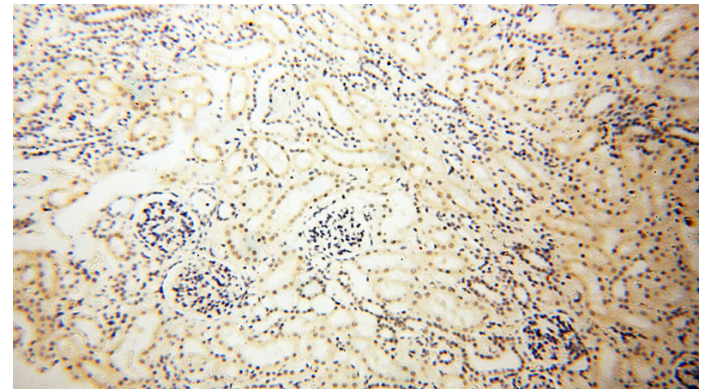
Preparation

This antibody was obtained by immunization of SMARCC1 recombinant protein (Accession Number: NM_003074). Purification method: Antigen affinity purified.

K-562 cells were subjected to SDS PAGE followed by western blot with Catalog No:115432(SMARCC1 antibody) at dilution of 1:500

Formulation

PBS with 0.02% sodium azide and 50% glycerol pH 7.3.



Storage

Store at -20°C. DO NOT ALIQUOT

Immunohistochemical of paraffin-embedded human kidney using Catalog No:115432(SMARCC1 antibody) at dilution of 1:100 (under 10x lens)

Clonality

Polyclonal

Ig Type

Rabbit IgG

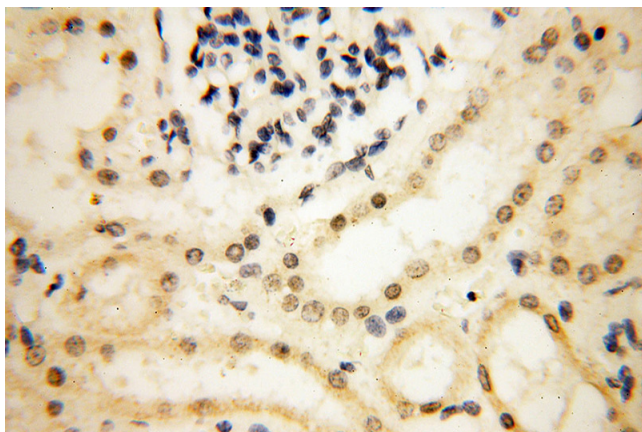
Applications

ELISA, WB, IHC, IP

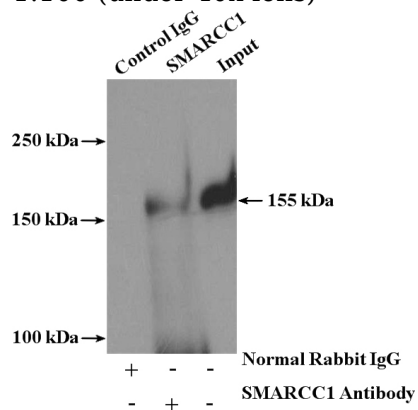
Dilutions

SMARCC1 antibody

Catalog Number: 115432



1:100 (under 40x lens)



IP Result of anti-SMARCC1 (IP:Catalog No:115432, 4ug; Detection:Catalog No:115432 1:600) with mouse brain tissue lysate 4000ug.

Immunohistochemical of paraffin-embedded human kidney using Catalog No:115432(SMARCC1 antibody) at dilution of