

SMAP2 antibody

Catalog Number: 115426

Product name

SMAP2 antibody

IHC: 1:20-1:200

IF: 1:10-1:100

Specificity

Human, Mouse, Rat; other species not tested.

Antibody description

SMAP2 Rabbit Polyclonal antibody. Positive IHC detected in human liver tissue. Positive IF detected in HepG2 cells. Positive WB detected in human liver tissue, human colon tissue, mouse small intestine tissue. Observed molecular weight by Western-blot: 47kd

Preparation

This antibody was obtained by immunization of SMAP2 recombinant protein (Accession Number: NM_022733). Purification method: Antigen affinity purified.

Formulation

PBS with 0.02% sodium azide and 50% glycerol pH 7.3.

Storage

Store at -20°C. DO NOT ALIQUOT

Clonality

Polyclonal

Ig Type

Rabbit IgG

Applications

ELISA, IHC, IF, WB

Dilutions

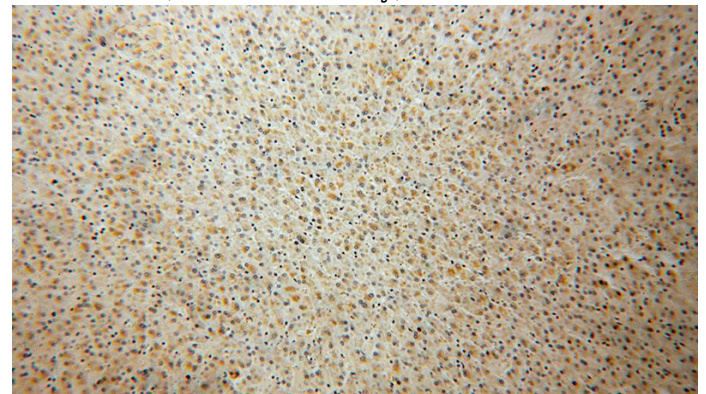
Recommended Dilution:

WB: 1:200-1:2000

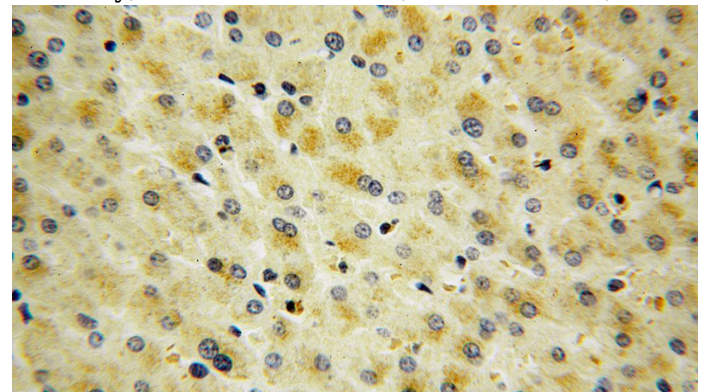
Validations



human liver tissue were subjected to SDS PAGE followed by western blot with Catalog No:115426(SMAP2 antibody) at dilution of 1:500



Immunohistochemical of paraffin-embedded human liver using Catalog No:115426(SMAP2 antibody) at dilution of 1:50 (under 10x lens)

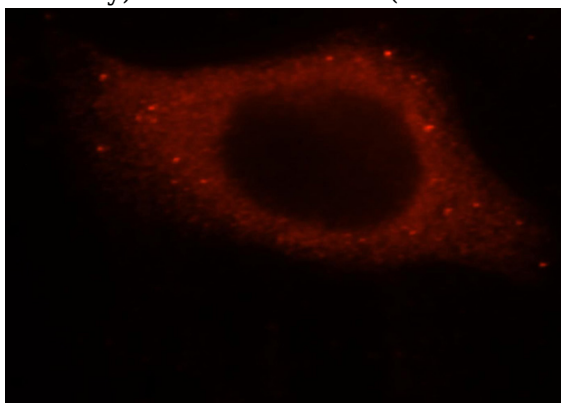


Immunohistochemical of paraffin-embedded human liver using Catalog No:115426(SMAP2

SMAP2 antibody

Catalog Number: 115426

antibody) at dilution of 1:50 (under 40x lens)



Immunofluorescent analysis of HepG2 cells, using SMAP2 antibody Catalog No:115426 at 1:25 dilution and Rhodamine-labeled goat anti-rabbit IgG (red).