

# SMAP1 antibody



Catalog Number: 115425

## Product name

SMAP1 antibody

IHC: 1:20-1:200

## Specificity

Human, Mouse, Rat; other species not tested.

## Antibody description

SMAP1 Rabbit Polyclonal antibody. Positive WB detected in NIH/3T3 cells, human adrenal gland tissue, human blood tissue, mouse brain tissue, rat lymph tissue. Positive IHC detected in human stomach tissue. Observed molecular weight by Western-blot: 50-55kd

## Preparation

This antibody was obtained by immunization of SMAP1 recombinant protein (Accession Number: NM\_001044305). Purification method: Antigen affinity purified.

## Formulation

PBS with 0.02% sodium azide and 50% glycerol pH 7.3.

## Storage

Store at -20°C. DO NOT ALIQUOT

## Clonality

Polyclonal

## Ig Type

Rabbit IgG

## Applications

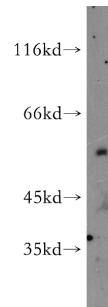
ELISA, WB, IHC

## Dilutions

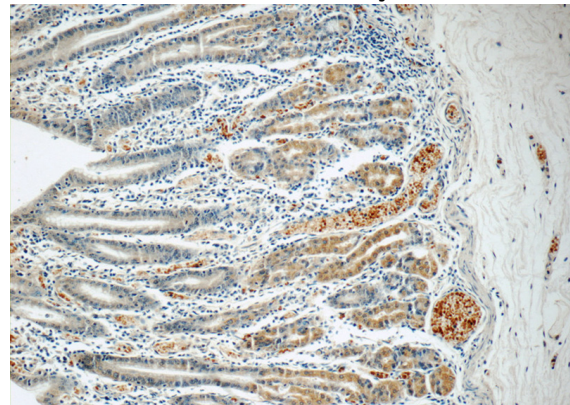
Recommended Dilution:

WB: 1:500-1:5000

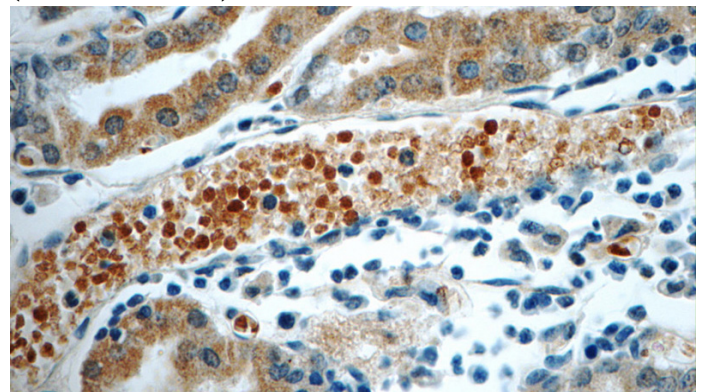
## Validations



NIH/3T3 cells were subjected to SDS PAGE followed by western blot with Catalog No:115425(SMAP1 antibody) at dilution of 1:1000



Immunohistochemistry of paraffin-embedded human stomach tissue slide using Catalog No:115425(SMAP1 Antibody) at dilution of 1:50 (under 10x lens)



Immunohistochemistry of paraffin-embedded human stomach tissue slide using Catalog No:115425(SMAP1 Antibody) at dilution of 1:50

# SMAP1 antibody



Catalog Number: 115425

---

(under 40x lens)