

SMAD7 antibody



Catalog Number: 115422

Product name

SMAD7 antibody

Specificity

Human, Mouse; other species not tested.

Antibody description

SMAD7 Rabbit Polyclonal antibody. Positive IHC detected in human liver tissue, human hepat°Cirrhosis tissue. Positive WB detected in mouse kidney tissue, mouse lung tissue, mouse skeletal muscle tissue. Observed molecular weight by Western-blot: 46 kDa

Preparation

This antibody was obtained by immunization of SMAD7 recombinant protein (Accession Number: NM_005904). Purification method: Antigen affinity purified.

Formulation

PBS with 0.1% sodium azide and 50% glycerol pH 7.3.

Storage

Store at -20°C. DO NOT ALIQUOT

Clonality

Polyclonal

Ig Type

Rabbit IgG

Applications

ELISA, WB, IHC

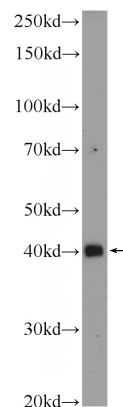
Dilutions

Recommended Dilution:

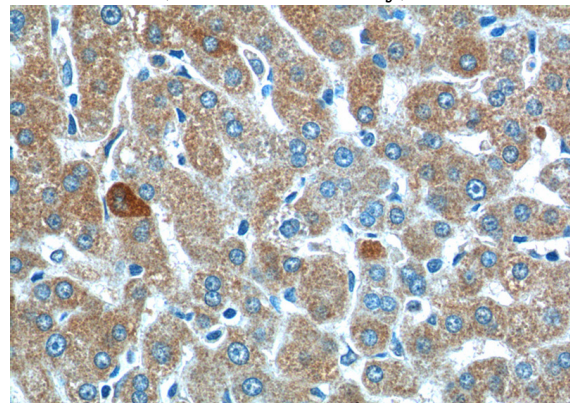
WB: 1:500-1:5000

IHC: 1:50-1:500

Validations



mouse kidney tissue were subjected to SDS PAGE followed by western blot with Catalog No:115422(SMAD7 Antibody) at dilution of 1:1000



Immunohistochemistry of paraffin-embedded human liver tissue slide using Catalog No:115422(SMAD7 Antibody) at dilution of 1:200 (under 40x lens).