

SMAD3 antibody

Catalog Number: 115417

Product name

SMAD3 antibody

IHC: 1:20-1:200

IF: 1:10-1:100

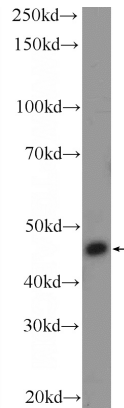
Specificity

Human; other species not tested.

Validations

Antibody description

SMAD3 Rabbit Polyclonal antibody. Positive WB detected in Jurkat cells, A431 cells, A549 cells, HeLa cells, SH-SY5Y cells. Positive IF detected in HeLa cells. Positive IHC detected in human colon cancer tissue, human liver cancer tissue. Observed molecular weight by Western-blot: 48 kDa



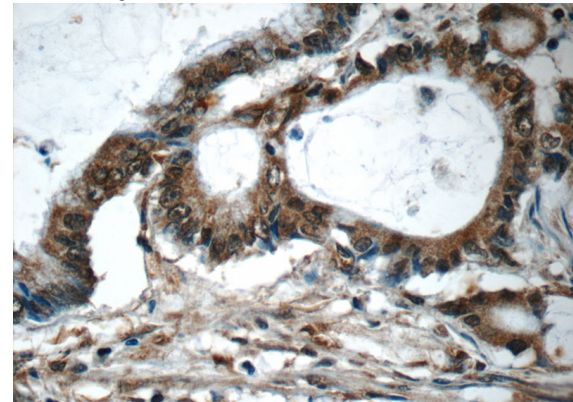
Preparation

This antibody was obtained by immunization of Peptide (Accession Number: NM_005902). Purification method: Antigen affinity purified.

Jurkat cells were subjected to SDS PAGE followed by western blot with Catalog No:115417(SMAD3 Antibody) at dilution of 1:600

Formulation

PBS with 0.1% sodium azide and 50% glycerol pH 7.3.



Storage

Store at -20°C. DO NOT ALIQUOT

Clonality

Polyclonal

Immunohistochemistry of paraffin-embedded human colon cancer tissue slide using Catalog No:115417(SMAD3 Antibody) at dilution of 1:50 (under 40x lens)

Ig Type

Rabbit IgG

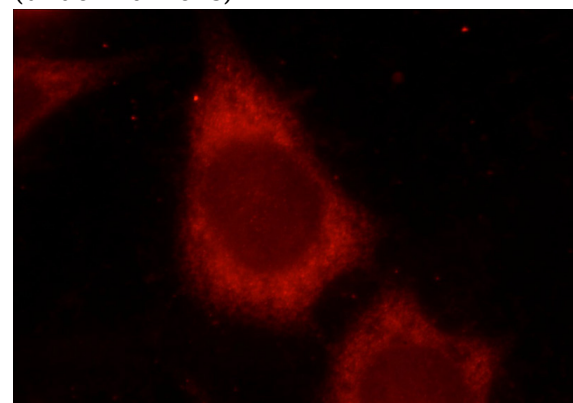
Applications

ELISA, WB, IHC, IF

Dilutions

Recommended Dilution:

WB: 1:200-1:2000



Immunofluorescent analysis of HeLa cells using

SMAD3 antibody



Catalog Number: 115417

Catalog No:115417(SMAD3 Antibody) at dilution of 1:25 and Rhodamine-Goat anti-Rabbit IgG