

# SLMAP antibody



Catalog Number: 115409

## Product name

SLMAP antibody

## Clonality

Polyclonal

## Immunogen

[Human SLMAP Recombinant protein \(His tag\)](#)

## Ig Type

Rabbit IgG

## Specificity

Human, Mouse; other species not tested.

## Applications

ELISA, WB

## Antibody description

SLMAP Rabbit Polyclonal antibody. Positive WB detected in mouse heart tissue, A431 cells, mouse skeletal muscle tissue. Observed molecular weight by Western-blot: 35, 45, 63-66, 83-91 kDa

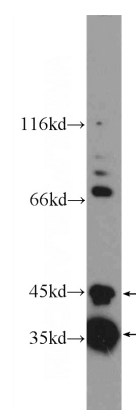
## Dilutions

Recommended Dilution:  
WB: 1:200-1:2000

## Preparation

This antibody was obtained by immunization of SLMAP recombinant protein (Accession Number: NM\_001304420). Purification method: Antigen affinity purified.

## Validations



## Formulation

PBS with 0.1% sodium azide and 50% glycerol pH 7.3.

## Storage

Store at -20°C. DO NOT ALIQUOT

mouse heart tissue were subjected to SDS PAGE followed by western blot with Catalog No:115409(SLMAP Antibody) at dilution of 1:600