

# SMYD3 antibody

Catalog Number: 115408

## Product name

SMYD3 antibody

IP: 1:200-1:2000

IHC: 1:20-1:200

## Specificity

Human, Mouse, Rat; other species not tested.

## Antibody description

SMYD3 Rabbit Polyclonal antibody. Positive IP detected in COLO 320 cells. Positive WB detected in mouse brain tissue, COLO 320 cells, HeLa cells, HepG2 cells. Positive IHC detected in human breast cancer tissue. Observed molecular weight by Western-blot: 42-45kd

## Preparation

This antibody was obtained by immunization of SMYD3 recombinant protein (Accession Number: NM\_001167740). Purification method: Antigen affinity purified.

## Formulation

PBS with 0.1% sodium azide and 50% glycerol pH 7.3.

## Storage

Store at -20°C. DO NOT ALIQUOT

## Clonality

Polyclonal

## Ig Type

Rabbit IgG

## Applications

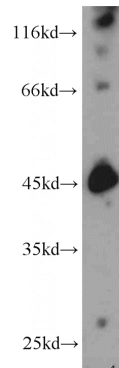
ELISA, IHC, IP, WB

## Dilutions

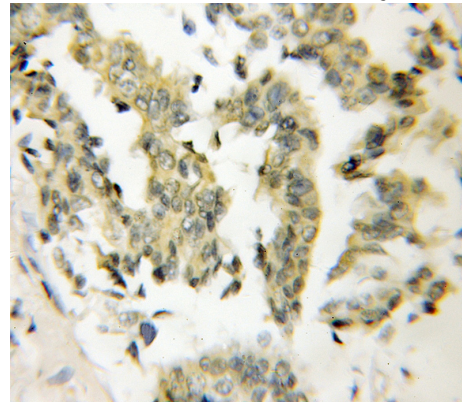
Recommended Dilution:

WB: 1:200-1:2000

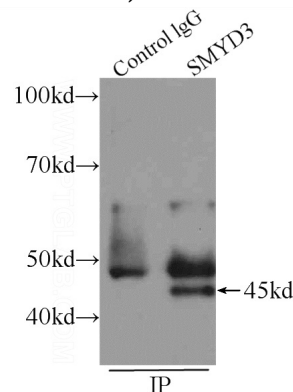
## Validations



mouse brain tissue were subjected to SDS PAGE followed by western blot with Catalog No:115408(SMYD3 antibody) at dilution of 1:800



Immunohistochemical of paraffin-embedded human breast cancer using Catalog No:115408(SMYD3 antibody) at dilution of 1:50 (under 10x lens)



IP Result of anti-SMYD3 (IP:Catalog No:115408,

# SMYD3 antibody



Catalog Number: 115408

---

4ug; Detection:Catalog No:115408 1:500) with COLO 320 cells lysate 1280ug.