

SMPDL3B antibody



Catalog Number: 115400

Product name

SMPDL3B antibody

Specificity

Human, Mouse, Rat; other species not tested.

Antibody description

SMPDL3B Rabbit Polyclonal antibody. Positive IF detected in COLO 320 cells. Positive WB detected in COLO 320 cells. Observed molecular weight by Western-blot: 42 kDa

Preparation

This antibody was obtained by immunization of SMPDL3B recombinant protein (Accession Number: NM_001009568). Purification method: Antigen affinity purified.

Formulation

PBS with 0.1% sodium azide and 50% glycerol pH 7.3.

Storage

Store at -20°C. DO NOT ALIQUOT

Clonality

Polyclonal

Ig Type

Rabbit IgG

Applications

ELISA, WB, IF

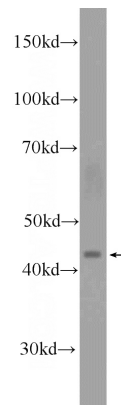
Dilutions

Recommended Dilution:

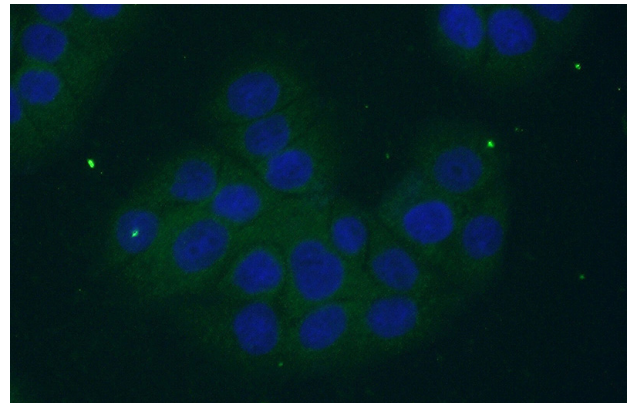
WB: 1:200-1:1000

IF: 1:50-1:500

Validations



COLO 320 cells were subjected to SDS PAGE followed by western blot with Catalog No:115400(SMPDL3B Antibody) at dilution of 1:300



Immunofluorescent analysis of (-20oc Ethanol) fixed COLO 320 cells using Catalog No:115400(SMPDL3B Antibody) at dilution of 1:50 and Alexa Fluor 488-conjugated AffiniPure Goat Anti-Rabbit IgG(H+L)