

SMOX antibody

Catalog Number: 115398

Product name

SMOX antibody

Specificity

Human, Mouse, Rat; other species not tested.

Antibody description

SMOX Rabbit Polyclonal antibody. Positive WB detected in PC-13 cells, A549 cells, MCF7 cells, Transfected HEK-293 cells. Positive IHC detected in human gliomas tissue, human meningioma tissue, human prostate cancer tissue. Observed molecular weight by Western-blot: 62 kDa

Preparation

This antibody was obtained by immunization of SMOX recombinant protein (Accession Number: NM_175840). Purification method: Antigen affinity purified.

Formulation

PBS with 0.02% sodium azide and 50% glycerol pH 7.3.

Storage

Store at -20°C. DO NOT ALIQUOT

Clonality

Polyclonal

Ig Type

Rabbit IgG

Applications

ELISA, WB, IHC

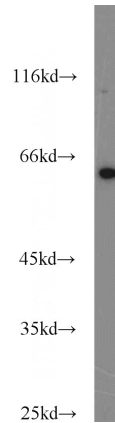
Dilutions

Recommended Dilution:

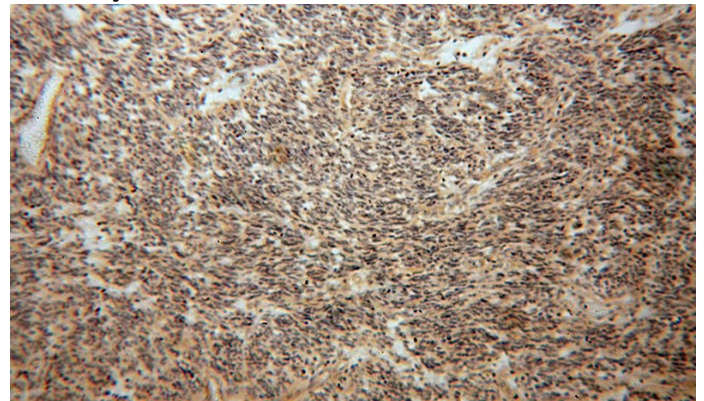
WB: 1:200-1:2000

IHC: 1:20-1:200

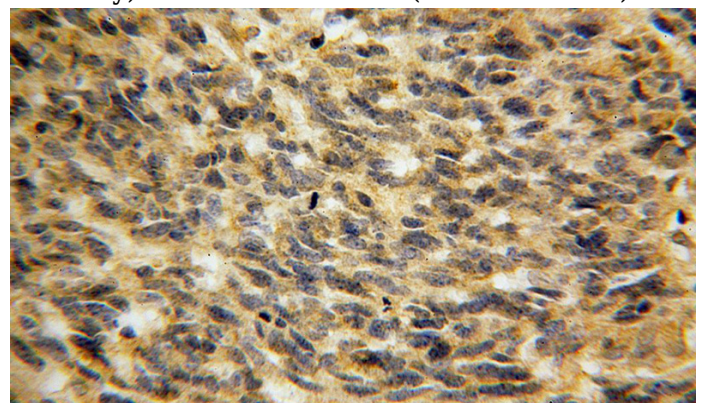
Validations



PC-13 cells were subjected to SDS PAGE followed by western blot with Catalog No:115398(SMOX antibody) at dilution of 1:500



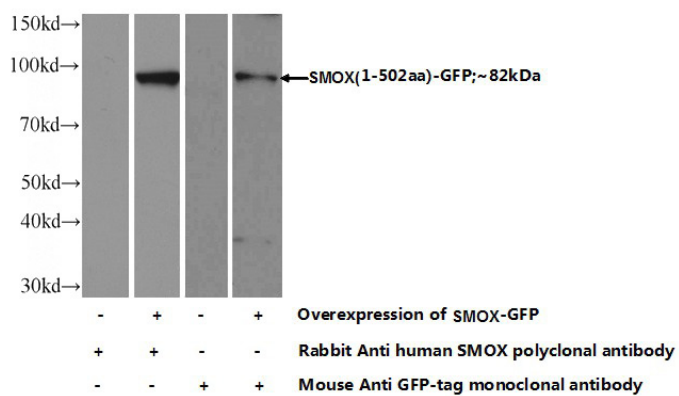
Immunohistochemical of paraffin-embedded human gliomas using Catalog No:115398(SMOX antibody) at dilution of 1:100 (under 10x lens)



Immunohistochemical of paraffin-embedded human gliomas using Catalog No:115398(SMOX antibody) at dilution of 1:100 (under 40x lens)

SMOX antibody

Catalog Number: 115398



Transfected HEK-293 cells were subjected to SDS PAGE followed by western blot with Catalog No:115398(SMOX Antibody) at dilution of 1:1000