

SMNDC1 antibody



Catalog Number: 115395

Product name

SMNDC1 antibody

Specificity

Human, Mouse, Rat; other species not tested.

Antibody description

SMNDC1 Rabbit Polyclonal antibody. Positive IHC detected in human lymphoma tissue. Positive WB detected in human lung tissue, human heart tissue, human liver tissue, mouse skeletal muscle tissue. Observed molecular weight by Western-blot: 30 kDa

Preparation

This antibody was obtained by immunization of SMNDC1 recombinant protein (Accession Number: NM_005871). Purification method: Antigen affinity purified.

Formulation

PBS with 0.1% sodium azide and 50% glycerol pH 7.3.

Storage

Store at -20°C. DO NOT ALIQUOT

Clonality

Polyclonal

Ig Type

Rabbit IgG

Applications

ELISA, WB, IHC

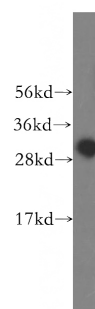
Dilutions

Recommended Dilution:

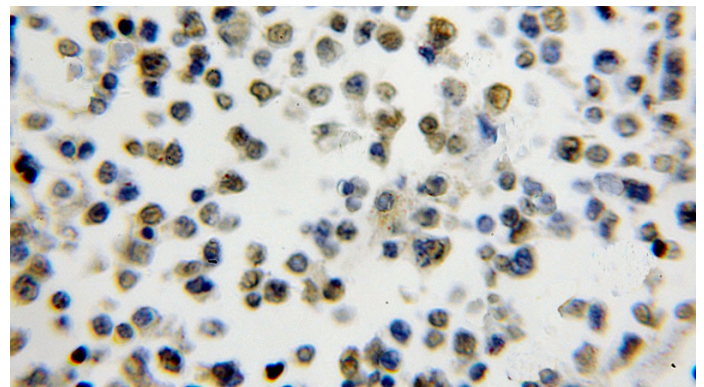
WB: 1:500-1:5000

IHC: 1:20-1:200

Validations



human lung tissue were subjected to SDS PAGE followed by western blot with Catalog No:115395(SMNDC1 antibody) at dilution of 1:400



Immunohistochemical of paraffin-embedded human lymphoma using Catalog No:115395(SMNDC1 antibody) at dilution of 1:50 (under 10x lens)