

SMN antibody

Catalog Number: 115392

Product name

SMN antibody

WB: 1:500-1:5000

IP: 1:500-1:5000

Specificity

Human, Mouse; other species not tested.

IHC: 1:20-1:200

IF: 1:10-1:100

Antibody description

SMN Rabbit Polyclonal antibody. Positive IP detected in HEK-293. Positive WB detected in HEK-293 cells, HepG2 cells, Jurkat cells, K-562 cells. Positive IF detected in HepG2 cells. Positive IHC detected in human kidney tissue, human heart tissue. Observed molecular weight by Western-blot: 38kd

Preparation

This antibody was obtained by immunization of SMN recombinant protein (Accession Number: NM_022875). Purification method: Antigen affinity purified.

Formulation

PBS with 0.02% sodium azide and 50% glycerol pH 7.3.

Storage

Store at -20°C. DO NOT ALIQUOT

Clonality

Polyclonal

Ig Type

Rabbit IgG

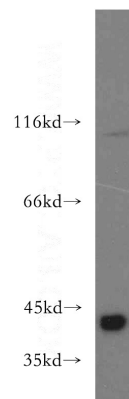
Applications

ELISA, WB, IHC, IF, IP

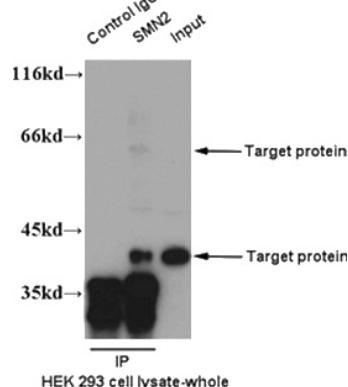
Dilutions

Recommended Dilution:

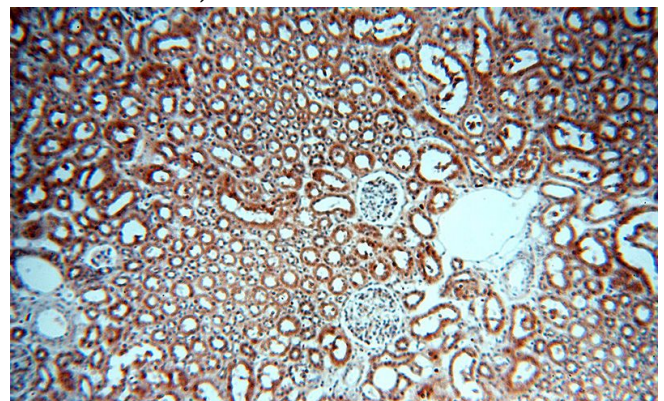
Validations



HEK-293 cells were subjected to SDS PAGE followed by western blot with Catalog No:115392(SMN2 antibody) at dilution of 1:800



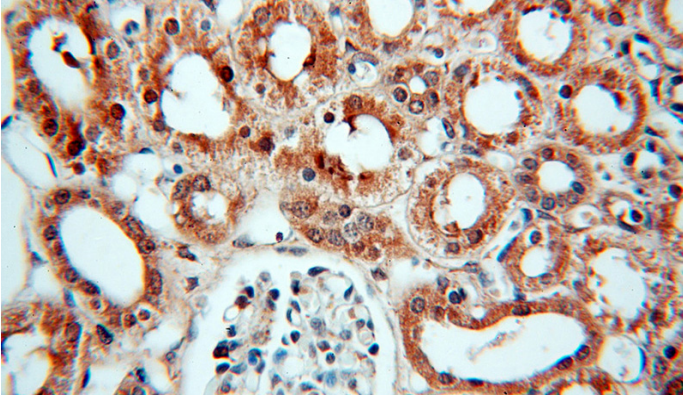
IP result of anti-SMN2(Catalog No:115392 for IP and Detection).



SMN antibody

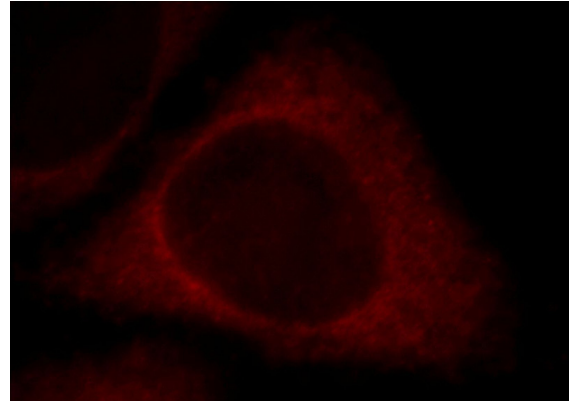
Catalog Number: 115392

Immunohistochemical of paraffin-embedded human kidney using Catalog No:115392(SMN2 antibody) at dilution of 1:100 (under 10x lens)



Immunohistochemical of paraffin-embedded human kidney using Catalog No:115392(SMN2

antibody) at dilution of 1:100 (under 40x lens)



Immunofluorescent analysis of HepG2 cells, using SMN2 antibody Catalog No:115392 at 1:25 dilution and Rhodamine-labeled goat anti-rabbit IgG (red).