

SMMHC antibody



Catalog Number: 115391

Product name

SMMHC antibody

Specificity

Human, Mouse, Rat; other species not tested.

Antibody description

SMMHC Rabbit Polyclonal antibody. Positive IHC detected in human colon tissue, human bladder tissue, human breast hyperplasia tissue, human heart tissue, human liver cancer tissue, human skeletal muscle tissue, human tonsil tissue, rat bladder tissue, rat colon tissue. Positive WB detected in mouse uterus tissue, mouse colon tissue. Observed molecular weight by Western-blot: 200 kDa

Preparation

This antibody was obtained by immunization of SMMHC recombinant protein (Accession Number: NM_022844). Purification method: Antigen affinity purified.

Formulation

PBS with 0.02% sodium azide and 50% glycerol pH 7.3.

Storage

Store at -20°C. DO NOT ALIQUOT

Clonality

Polyclonal

Ig Type

Rabbit IgG

Applications

ELISA, WB, IHC

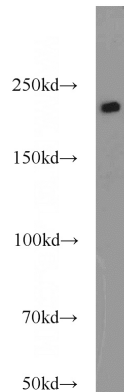
Dilutions

Recommended Dilution:

WB: 1:1000-1:10000

IHC: 1:20-1:200

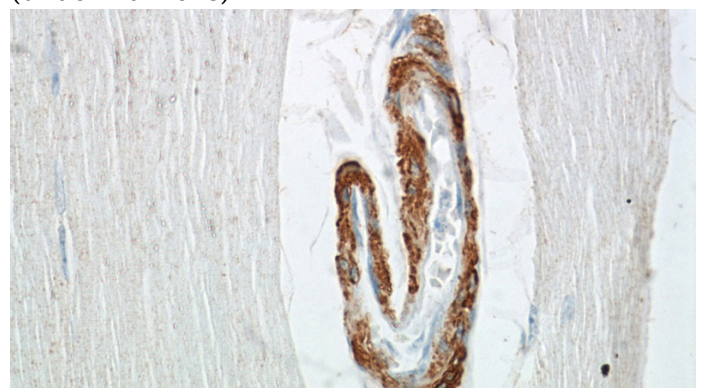
Validations



mouse uterus tissue were subjected to SDS PAGE followed by western blot with Catalog No:115391(MYH11 antibody) at dilution of 1:3000



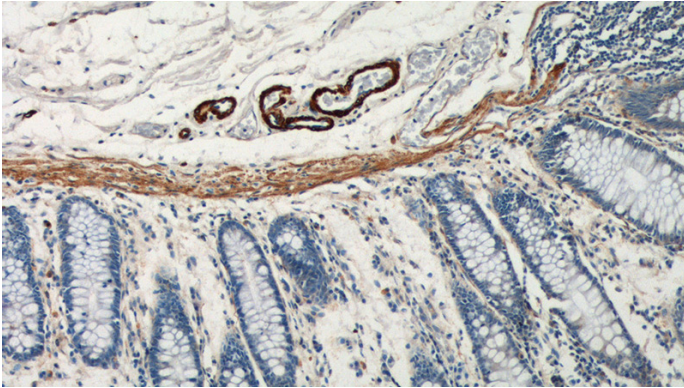
Immunohistochemical of paraffin-embedded human skeletal muscle using Catalog No:115391(MYH11 antibody) at dilution of 1:50 (under 10x lens)



SMMHC antibody

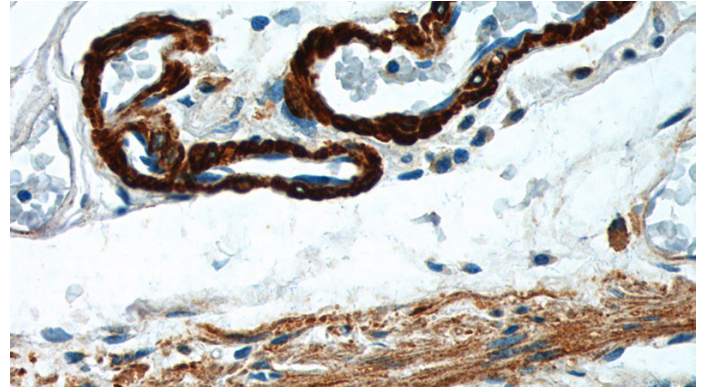
Catalog Number: 115391

Immunohistochemical of paraffin-embedded human skeletal muscle using Catalog No:115391(MYH11 antibody) at dilution of 1:50 (under 40x lens)



Immunohistochemistry of paraffin-embedded human colon tissue slide using Catalog

No:115391(MYH11 Antibody) at dilution of 1:200 (under 10x lens).



Immunohistochemistry of paraffin-embedded human colon tissue slide using Catalog No:115391(MYH11 Antibody) at dilution of 1:200 (under 40x lens).