

SMMHC antibody



Catalog Number: 115390

Product name

SMMHC antibody

Specificity

Human, Mouse, Rat; other species not tested.

Antibody description

SMMHC Rabbit Polyclonal antibody. Positive WB detected in mouse colon tissue, mouse bladder tissue, mouse uterus tissue, rat uterus tissue. Observed molecular weight by Western-blot: 227kd

Preparation

This antibody was obtained by immunization of SMMHC recombinant protein (Accession Number: NM_022844). Purification method: Antigen affinity purified.

Formulation

PBS with 0.02% sodium azide and 50% glycerol pH 7.3.

Storage

Store at -20°C. DO NOT ALIQUOT

Clonality

Polyclonal

Ig Type

Rabbit IgG

Applications

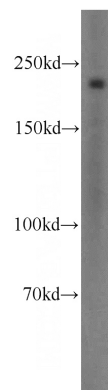
ELISA, WB

Dilutions

Recommended Dilution:

WB: 1:1000-1:10000

Validations



mouse colon tissue were subjected to SDS PAGE followed by western blot with Catalog No:115390(MYH11 antibody) at dilution of 1:400