

SMEK2 antibody

Catalog Number: 115388

Product name

SMEK2 antibody

IHC: 1:20-1:200

IF: 1:20-1:200

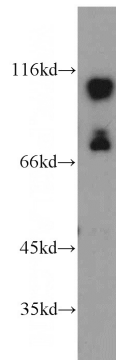
Specificity

Human, Mouse, Rat; other species not tested.

Validations

Antibody description

SMEK2 Rabbit Polyclonal antibody. Positive IHC detected in human cervical cancer tissue. Positive IF detected in HEK-293 cells. Positive WB detected in HEK-293 cells, A2780 cells, HeLa cells, MCF7 cells. Observed molecular weight by Western-blot: 94-97 kDa, 87 kDa



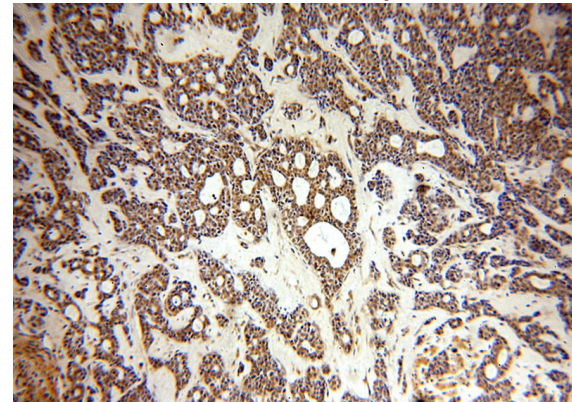
Preparation

This antibody was obtained by immunization of SMEK2 recombinant protein (Accession Number: NM_020463). Purification method: Antigen affinity purified.

HEK-293 cells were subjected to SDS PAGE followed by western blot with Catalog No:115388(SMEK2 antibody) at dilution of 1:500

Formulation

PBS with 0.02% sodium azide and 50% glycerol pH 7.3.



Storage

Store at -20°C. DO NOT ALIQUOT

Clonality

Polyclonal

Immunohistochemical of paraffin-embedded human cervical cancer using Catalog No:115388(SMEK2 antibody) at dilution of 1:100 (under 10x lens)

Ig Type

Rabbit IgG

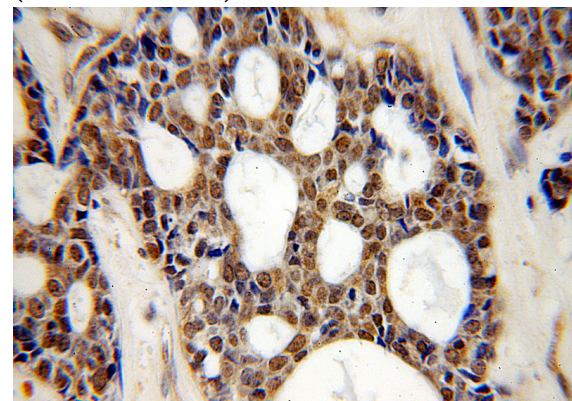
Applications

ELISA, WB, IHC, IF

Dilutions

Recommended Dilution:

WB: 1:500-1:5000



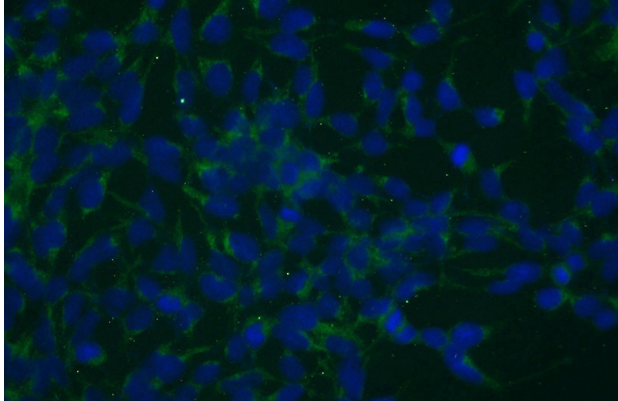
Immunohistochemical of paraffin-embedded

SMEK2 antibody



Catalog Number: 115388

human cervical cancer using Catalog
No:115388(SMEK2 antibody) at dilution of 1:100
(under 40x lens)



Immunofluorescent analysis of (-20oc Ethanol)
fixed HEK-293 cells using Catalog
No:115388(SMEK2 Antibody) at dilution of 1:50
and Alexa Fluor 488-conjugated AffiniPure Goat
Anti-Rabbit IgG(H+L)