

SMC5 antibody



Catalog Number: 115382

Product name

SMC5 antibody

Specificity

Human, Mouse, Rat; other species not tested.

Antibody description

SMC5 Rabbit Polyclonal antibody. Positive IF detected in HeLa cells. Positive WB detected in HeLa cells. Observed molecular weight by Western-blot: 120-130 kDa

Preparation

This antibody was obtained by immunization of SMC5 recombinant protein (Accession Number: NM_015110). Purification method: Antigen affinity purified.

Formulation

PBS with 0.02% sodium azide and 50% glycerol pH 7.3.

Storage

Store at -20°C. DO NOT ALIQUOT

Clonality

Polyclonal

Ig Type

Rabbit IgG

Applications

ELISA, WB, IF

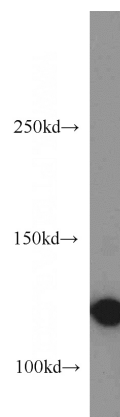
Dilutions

Recommended Dilution:

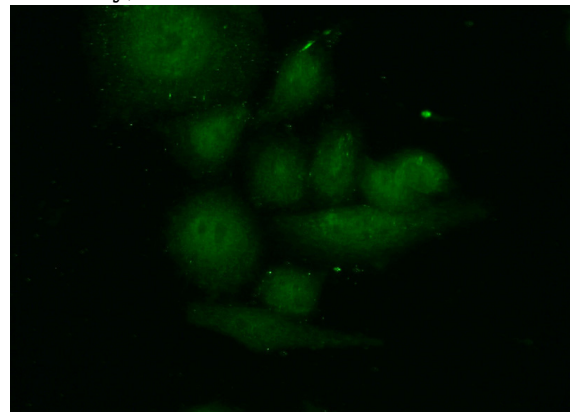
WB: 1:500-1:5000

IF: 1:50-1:500

Validations



HeLa cells were subjected to SDS PAGE followed by western blot with Catalog No:115382(SMC5 antibody) at dilution of 1:500



Immunofluorescent analysis of (10% Formaldehyde) fixed HeLa cells using Catalog No:115382(SMC5 Antibody) at dilution of 1:50 and Alexa Fluor 488-conjugated AffiniPure Goat Anti-Rabbit IgG(H+L)