

# SLC38A1 antibody



Catalog Number: 115373

## Product name

SLC38A1 antibody

IP: 1:200-1:2000

IHC: 1:20-1:200

## Specificity

Human, Mouse, Rat; other species not tested.

## Antibody description

SLC38A1 Rabbit Polyclonal antibody. Positive IHC detected in human prostate cancer tissue. Positive IP detected in mouse brain tissue. Positive WB detected in human brain tissue, human kidney tissue, Jurkat cells. Observed molecular weight by Western-blot: 60-65 kDa

## Preparation

This antibody was obtained by immunization of SLC38A1 recombinant protein (Accession Number: XM\_047429598). Purification method: Antigen affinity purified.

## Formulation

PBS with 0.1% sodium azide and 50% glycerol pH 7.3.

## Storage

Store at -20°C. DO NOT ALIQUOT

## Clonality

Polyclonal

## Ig Type

Rabbit IgG

## Applications

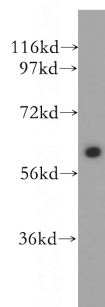
ELISA, WB, IHC, IP

## Dilutions

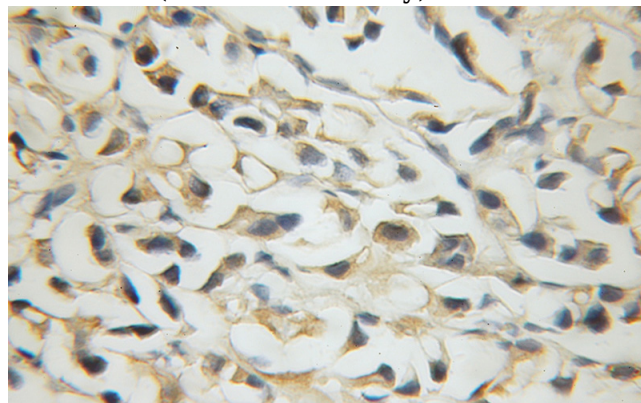
Recommended Dilution:

WB: 1:200-1:2000

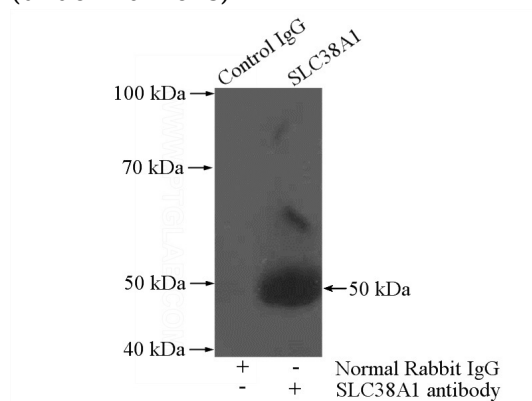
## Validations



human brain tissue were subjected to SDS PAGE followed by western blot with Catalog No:115373(SLC38A1 antibody) at dilution of 1:500



Immunohistochemical of paraffin-embedded human prostate cancer using Catalog No:115373(SLC38A1 antibody) at dilution of 1:50 (under 40x lens)



IP Result of anti-SLC38A1 (IP:Catalog No:115373,

# SLC38A1 antibody



Catalog Number: 115373

---

4ug; Detection:Catalog No:115373 1:500) with mouse brain tissue lysate 4000ug.