

SLC37A4 antibody



Catalog Number: 115372

Product name

SLC37A4 antibody

Specificity

human, mouse, rat; other species not tested.

Antibody description

SLC37A4 Rabbit Polyclonal antibody. Positive IHC detected in human kidney. Positive WB detected in mouse kidney tissue, mouse liver tissue. Observed molecular weight by Western-blot: 46kd

Preparation

This antibody was obtained by immunization of SLC37A4 recombinant protein (Accession Number: NM_001467). Purification method: Antigen affinity purified.

Formulation

PBS with 0.02% sodium azide and 50% glycerol pH 7.3.

Storage

Store at -20°C. DO NOT ALIQUOT

Clonality

Polyclonal

Ig Type

Rabbit IgG

Applications

ELISA, WB, IHC

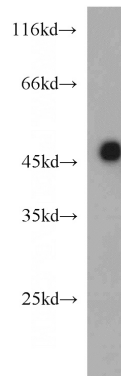
Dilutions

Recommended Dilution:

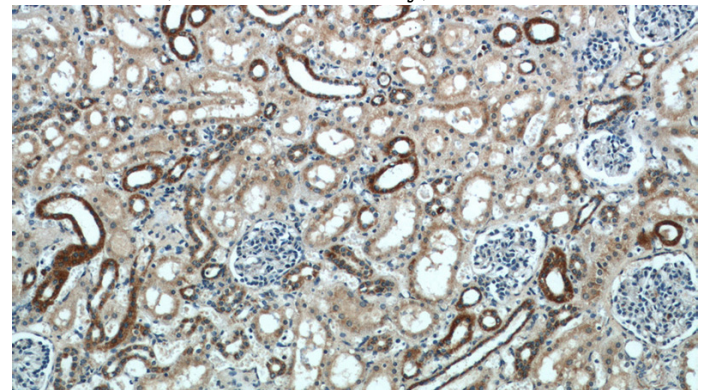
WB: 1:500-1:5000

IHC: 1:20-1:200

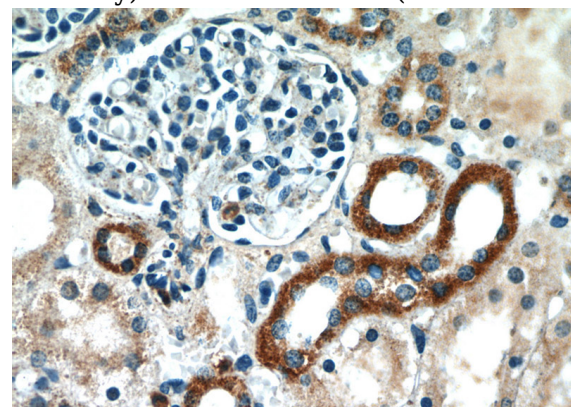
Validations



mouse kidney tissue were subjected to SDS PAGE followed by western blot with Catalog No:115372(SLC37A4 antibody) at dilution of 1:500



Immunohistochemical of paraffin-embedded human kidney using Catalog No:115372(SLC37A4 antibody) at dilution of 1:50 (under 10x lens)



Immunohistochemical of paraffin-embedded human kidney using Catalog No:115372(SLC37A4 antibody) at dilution of 1:50 (under 40x lens)