

SLC37A2 antibody



Catalog Number: 115371

Product name

SLC37A2 antibody

Specificity

human, mouse, rat; other species not tested.

Antibody description

SLC37A2 Rabbit Polyclonal antibody. Positive WB detected in HepG2 cells, HeLa cells, mouse spleen tissue, mouse thymus tissue, RAW 264.7 cells. Observed molecular weight by Western-blot: 50-75kd

Preparation

This antibody was obtained by immunization of SLC37A2 recombinant protein (Accession Number: NM_198277). Purification method: Antigen affinity purified.

Formulation

PBS with 0.02% sodium azide and 50% glycerol pH 7.3.

Storage

Store at -20°C. DO NOT ALIQUOT

Clonality

Polyclonal

Ig Type

Rabbit IgG

Applications

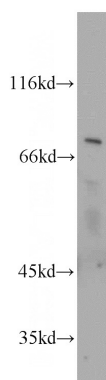
ELISA, WB

Dilutions

Recommended Dilution:

WB: 1:500-1:5000

Validations



HepG2 cells were subjected to SDS PAGE followed by western blot with Catalog No:115371(SLC37A2 antibody) at dilution of 1:600